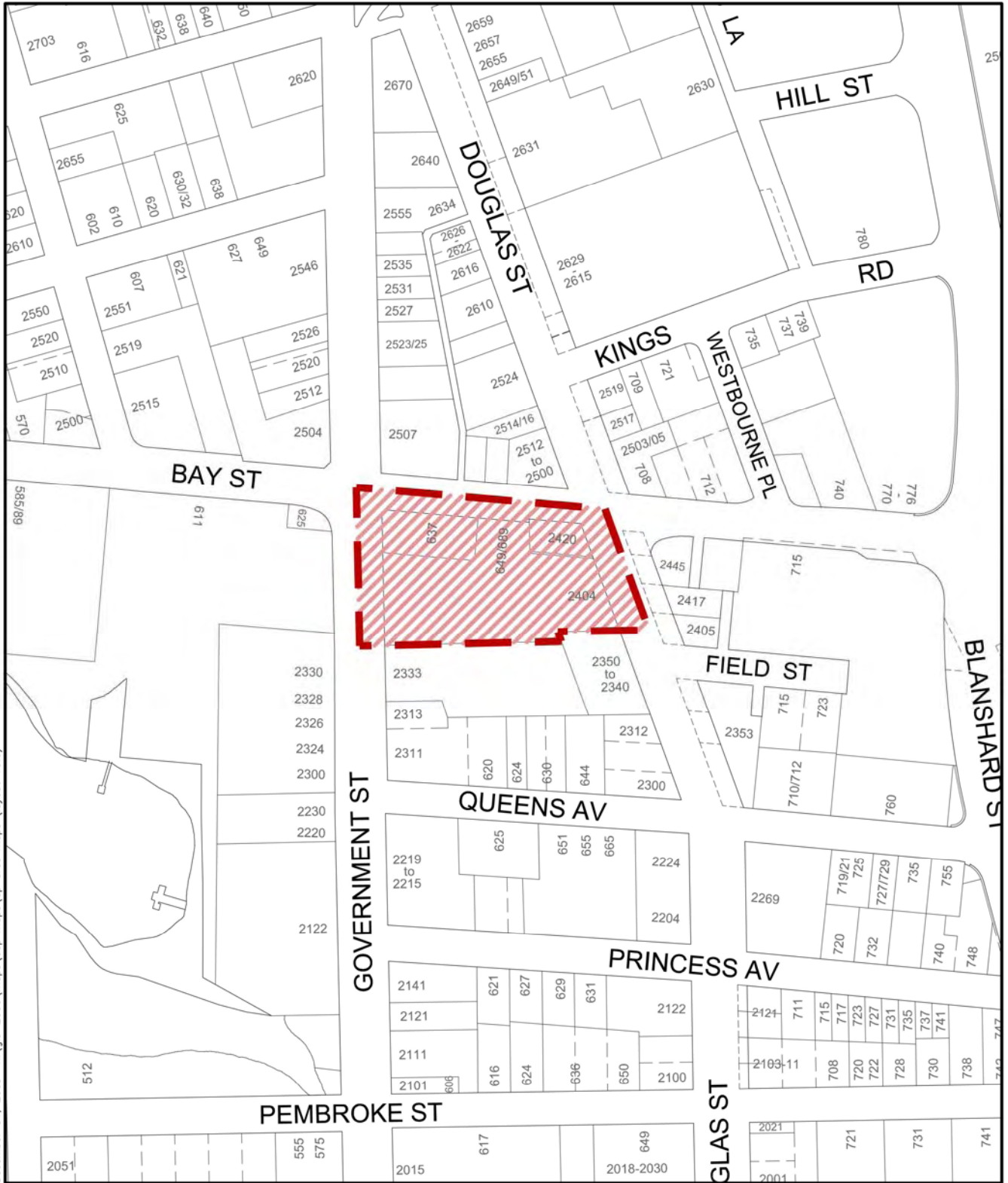


December 31, 2003 n:\gis-2000\maps\ocp maps\dp area maps (layout 10.6)



Map 10.6
 Development Permit Area 6
 Bay, Government, and Douglas



DEVELOPMENT PERMIT Area 6, BAY, GOVERNMENT AND DOUGLAS

- 1.. Pursuant to the provisions of Section 919.1 (1) (f) of the Local Government Act, the area shown within the heavy dark grey line on Map 10.6 is designated as Development Permit Area (DPA) 6, Bay, Government and Douglas, for the purposes of establishing objectives and providing guidelines for the form and character of commercial development on this prominent site.
2. The objectives which justify this designation are:
 - (a) To realize the economic potential of the area;
 - (b) To ensure that a high standard of architectural and streetscape design is maintained on this prominent approach to the City's core.
3. The following guidelines will apply in DPA 6 to achieve the objectives set out in Section 2:
 - Advisory Design Guidelines for Buildings, Signs and Awnings (1981), with particular reference to streetscape, architectural and landscape features.
4. Where there is any conflict between any provisions of the guidelines specified in Section 3 and the provisions of the Official Community Plan, the provisions of the Official Community Plan will prevail.