

Moss Street and May Street Concept

Mixed use buildings up to 3 storeys facing onto May Street and transitioning to surrounding neighbourhood

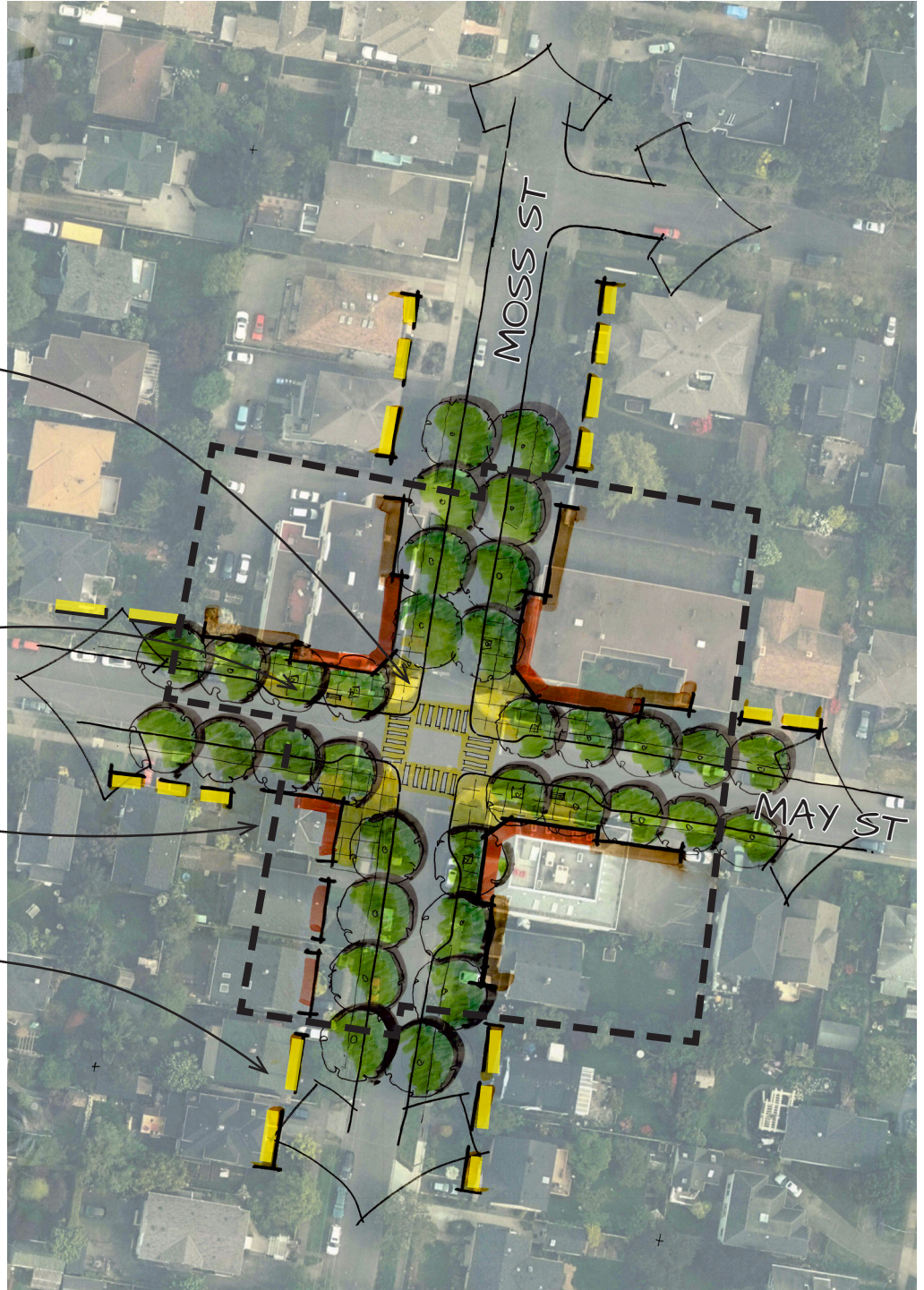
Use distinct paving, attractive street furniture, improved lighting and enhanced landscaping to highlight intersection





Enhance bus stop

Retain historic houses

Sensitive neighbourhood infill directly adjacent to village

Support live-work uses



-  Mixed use with commercial frontage at grade
-  Multi-unit residential
-  Sensitive neighbourhood infill (e.g. townhouses, houseplexes or conversion of existing houses)
-  Village boundary

