

NO. 19-002

A BYLAW OF THE CITY OF VICTORIA

The purposes of this Bylaw are to amend the Zoning Regulation Bylaw to add daycare as a permitted use within C1-C Zone, Club District and to update the format of the regulations to current bylaw standards.

The Council of The Corporation of the City of Victoria enacts the following provisions:

- 1 This Bylaw may be cited as the “ZONING REGULATION BYLAW, AMENDMENT BYLAW (NO. 1178)”.
- 2 The Zoning Regulation Bylaw is amended in Schedule B by deleting Part 4.21 and replacing it with the provisions contained in Schedule 1 of this Bylaw as the new Part 4.21.

READ A FIRST TIME the **31st** day of **January** 2019

READ A SECOND TIME the **31st** day of **January** 2019

Public hearing held on the day of 2019

READ A THIRD TIME the day of 2019

ADOPTED on the day of 2019

CITY CLERK

MAYOR

PART 4.21 – C1-C ZONE, CLUB DISTRICT

4.21.1 Permitted Uses in this Zone

The following uses are the only uses permitted in this Zone:

- a. Athletics Club
- b. Day Care

4.21.2 Floor Area

- a. Assembly floor area within a building (maximum) 264.9m²

4.21.3 Height

- a. Principal building height (maximum) 6.1m

4.21.4 Setbacks, Projections

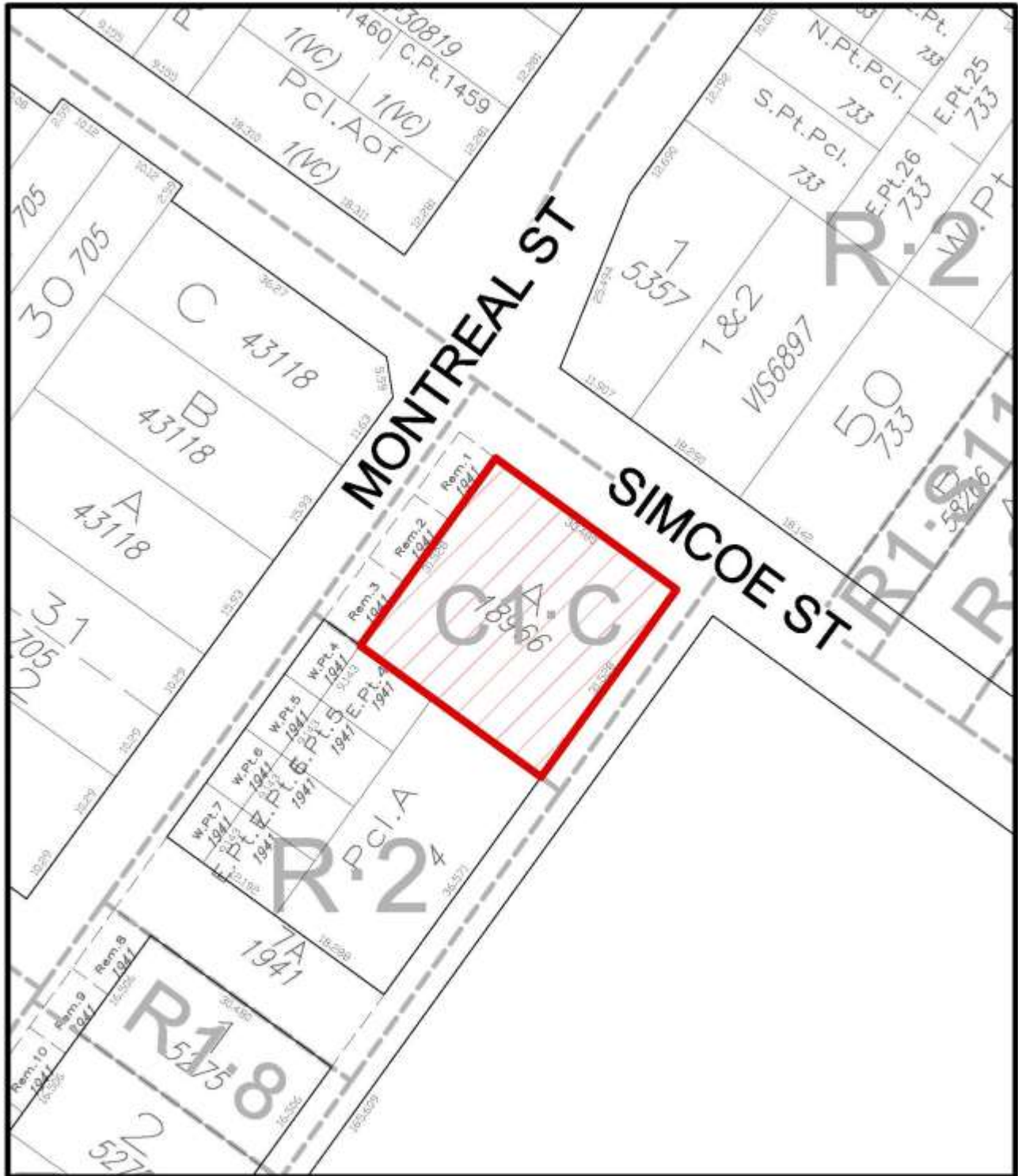
- a. Front yard setback (minimum) 13.9m
- b. Side yard setback on a flanking street for a corner lot (minimum) 6.0m
- c. Setback from street boundary with a lane (minimum) 3.8m
- d. For the purposes of calculating setbacks, any porch or step shall be deemed not to be a building.

4.21.5 Site Coverage

- a. Site Coverage (maximum) 30%

4.21.6 Vehicle and Bicycle Parking

- a. Vehicle parking (minimum) Subject to the regulations in Schedule “C” except as otherwise specified by the regulations in this Part
- b. Vehicle Parking requirement for Assembly use (minimum) 1 stall per 26.5m²
- c. Bicycle parking (minimum) Subject to the regulations in Schedule “C”



205 Simcoe Street
Rezoning No.00653

