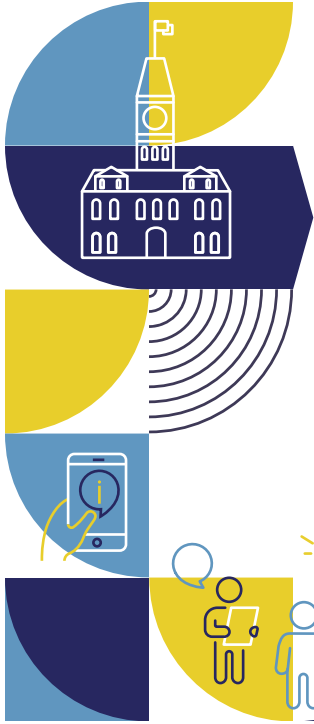




connect

The City of Victoria is located on the homelands of the Songhees and Esquimalt People.



Victoria Votes 2022

Saturday, October 15



What You Need to Know to Vote

This issue of Connect provides what you need to know to vote in the City of Victoria’s 2022 Local Government Election to elect the following for a **four-year term**:

- 1 Mayor
- 8 City Councillors
- 9 School District 61 Trustees
- 3 CRD Directors

Quick Facts

- General Voting Day is Saturday, October 15 from 8 a.m. – 8 p.m.
- There will be 13 voting places on General Voting Day.
- To reduce wait times, each voting place will have at least two voting machines.
- There will be five advance voting opportunities.
- Anyone eligible can request to vote by mail.

Who Can Vote?

To be eligible to vote, you must be:

- 18 years of age or older on General Voting Day for the election; and
- a Canadian citizen; and
- a resident of British Columbia for at least six months immediately before the day of registration; and
- a resident of the City of Victoria; and
- not disqualified under the *Local Government Act* or any other enactment from voting in an election or assent voting and not otherwise disqualified by law.

Note:

If you own property in Victoria but live elsewhere in B.C., you might be eligible to vote in the City of Victoria local government election as a non-resident property elector. Visit victoria.ca/election for details.

Voter Card

The City of Victoria has mailed Voter Cards to all Victoria residents who are on the Voters List. Voter Cards will arrive in the mail by the end of September. Voters are encouraged to bring these cards with them to vote as this card speeds up the voting process. **The Voter Card does not replace the requirement to provide identification at a voting place.**



Where Can I Vote?

Eligible voters can vote at ANY of the following locations on General Voting Day on Saturday, October 15 from 8 a.m. – 8 p.m.:

- | | |
|---|--|
| <ul style="list-style-type: none"> 1 Central Baptist Church
833 Pandora Avenue 2 Central Middle School*
1280 Fort Street 3 Cook Street Village Activity Centre
380 Cook Street 4 George Jay Elementary School
1118 Princess Avenue 5 Glenlyon Norfolk School
781 Richmond Avenue 6 James Bay Community School
140 Oswego Street 7 James Bay New Horizons Centre
234 Menzies Street | <ul style="list-style-type: none"> 8 Margaret Jenkins Elementary School
1824 Fairfield Road 9 Oaklands Elementary School
2827 Belmont Avenue 10 Quadra Elementary School
3031 Quadra Street 11 Sir James Douglas Elementary School
401 Moss Street 12 SJ Burnside Education Centre
498 Cecelia Road 13 Victoria West Elementary School
750 Front Street <p>*An accessible voting machine will be available at Central Middle School on General Voting Day.</p> |
|---|--|



Advance Voting Opportunities

Five advance voting opportunities will be open to ALL ELIGIBLE VOTERS.

- A Wednesday, October 5, 8 a.m. – 8 p.m., Victoria City Hall, 1 Centennial Square*
- B Friday, October 7, 9 a.m. – 6 p.m., Our Place, 919 Pandora Avenue
- A Tuesday, October 11, 8 a.m. – 8 p.m., Victoria City Hall, 1 Centennial Square*
- C Tuesday, October 11, 8 a.m. – 4 p.m., University of Victoria, Student Union Building, 3800 Finnerty Road
- A Wednesday, October 12, 9 a.m. – 6 p.m., Victoria City Hall, 1 Centennial Square*

*An accessible voting machine will be available at Victoria City Hall.

Learn More:

Victoria Votes App



Download the free **Victoria Votes app** from the App Store or Google Play for information on where to vote, candidate profiles and more.

Video

Watch a short video at victoria.ca/election that explains what you need to know to vote in Victoria's 2022 Local Government Election.

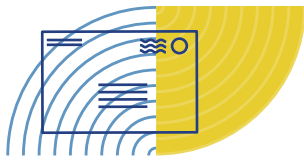
Candidate Profile Guide



To assist voters in finding information about candidates and to make informed choices in Victoria's 2022 Local Government Election, the City provides an online Candidate Profile Guide.

All candidates were given the opportunity to submit a brief candidate profile and photograph to let voters know about themselves and their platforms.

The Candidate Profile Guide is available at victoria.ca/election.



Voting by Mail

ANYONE eligible to vote can request to vote by mail in the City of Victoria's 2022 Local Government Election.

Your mail ballot must be received by the City of Victoria by 8 p.m. on Saturday, October 15, 2022 to be counted.

To request a mail ballot package, visit victoria.ca/election to fill out an online form or call 250.361.0571.

- You may request a mail ballot package up to and including on General Voting Day.
- **Completed mail ballots should be placed in the mail by Thursday, October 6 at the latest.**
- **NOTE: After October 6**, all requested mail ballots are to be picked up at City Hall and can be returned at the Drop Box at the Pandora Avenue entrance of City Hall, at an advance voting opportunity or by 8 p.m. at one of the 13 voting places on General Voting Day.
- Postage is included for mail ballot packages mailed within Canada.
- If you have requested a mail ballot but have not received one by General Voting Day, please contact City of Victoria Legislative Services at 250.361.0571.



Accessible Voting

For voters with accessibility needs, we have services available to help you vote.

- All advance voting places and general voting places are wheelchair accessible. Voters who can't enter a voting place can vote at the curb or in the parking lot.
- An accessible voting machine will be available at:
 - **Advance Voting:** Victoria City Hall, 1 Centennial Square
 - **October 15:** Central Middle School, 1280 Fort Street
- Assistance is available to voters unable to mark a ballot because of a physical disability or difficulty with reading or writing. Voters needing assistance to mark their ballot may bring another person who will be required to sign a declaration or ask an Election Official for assistance.



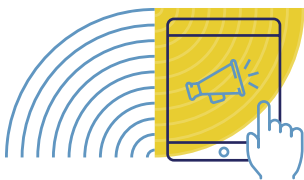
Special Voting

The Chief Election Officer may establish special voting opportunities to assist eligible voters who wish to vote but are unable to attend a regular voting place on General Voting Day because they are in a long-term care facility.



Translated Materials

The information in this newsletter is also available in multiple languages at victoria.ca/election.



Tune In

Election results will be available live on Saturday, October 15 after 8 p.m. at victoria.ca/election.



What to Bring to Vote?

Visit victoria.ca/election to see if you're on the Voters List.

If you're on the Voters List, you only need to bring **one** piece of ID with you to vote, but it must include your signature.

If you aren't on the Voters List, you can register to vote at a Voting Place and need to bring **two** pieces of ID to prove your identity and place of residence (one piece must include your signature).

The following are valid documents for proving voter identity.

- BC Driver's Licence (Note: the dual BC Driver's Licence and Care Card are considered one (1) piece of ID)
- BC Identification Card
- Photo BC Services Card (Note: the dual BC Driver's Licence and Care Card are considered one (1) piece of ID)
- Certificate of Indian Status as issued by the Government of Canada
- Non-photo BC Services Card
- Student card issued by a post-secondary institution
- Owner's Certificate of Insurance and Vehicle Licence issued by ICBC
- BC CareCard or BC Gold CareCard
- Ministry of Social Development and Economic Security Request for Continued Assistance Form SDES8
- Social Insurance Card
- Confirmation of Social Insurance Number letter issued by the Government of Canada
- Canadian Citizenship Card
- City of Victoria Property Tax Notice
- Statement of Employment Insurance Benefits
- BC Government cheque
- Income Tax Assessment Notice
- Canadian Forces Identification
- Old Age Security Identification Card
- Canadian Passport
- Birth Certificate
- Credit card or debit card or statement
- Utility bill issued for the supply of electricity, natural gas, water, telephone services or coaxial cable services
- A completed and signed Solemn Declaration that is witnessed and signed by a Commissioner of Affidavits in Form 12-16



For More Information

victoria.ca/election | elections@victoria.ca | 250.361.0571

Our Commitment to the Environment - The Connect newsletter is printed on FSC certified, 100% recycled paper.