

A BYLAW OF THE CITY OF VICTORIA

The purpose of this Bylaw is to amend the Zoning Regulation Bylaw by creating the C1-S3 Zone, Limited Tolmie Commercial District, and to rezone the land known as 3198 Quadra Street from the C1-S Zone, Limited Commercial Service Station District, to the C1-S3 Zone, Limited Tolmie Commercial District.

The Council of The Corporation of the City of Victoria in an open meeting assembled enacts the following provisions:

- 1 This Bylaw may be cited as the “ZONING REGULATION BYLAW, AMENDMENT BYLAW (NO. 1287)”.
- 2 Bylaw No. 80-159, the Zoning Regulation Bylaw, is amended in the Table of Contents of Schedule “B” under the caption PART 4 – General Commercial Zones by adding the following words:

“4.110 C1-S3 Zone, Limited Tolmie Commercial District”
- 3 The Zoning Regulation Bylaw is also amended by adding to Schedule B after Part 4.109 the provisions contained in Schedule 1 of this Bylaw.
- 4 The land known as 3198 Quadra Street, legally described as PID: 025-462-237 Lot A Section 4 Victoria District Plan VIP74124 and shown hatched on the attached map, is removed from the C1-S Zone, Limited Commercial Service Station District, and placed in the C1-S3 Zone, Limited Tolmie Commercial District.

READ A FIRST TIME the **8th** day of **September** 2022

READ A SECOND TIME the **8th** day of **September** 2022

Public hearing held on the day of 2022

READ A THIRD TIME the day of 2022

ADOPTED on the day of 2022

CITY CLERK

MAYOR

PART 4.110 – C1-S3 ZONE, LIMITED TOLMIE COMMERCIAL DISTRICT

4.110.1 Permitted Uses

The following uses are the only uses permitted:

- a. Uses permitted in the C1-S Zone, Limited Commercial Service Station District; and
- b. Storefront cannabis retailer provided that only one storefront cannabis retailer is permitted to operate on a single lot.

4.110.2 Size and Location of Uses

A storefront cannabis retailer must:

- a. not occupy more than 160m²; and
- b. be located on the ground floor.

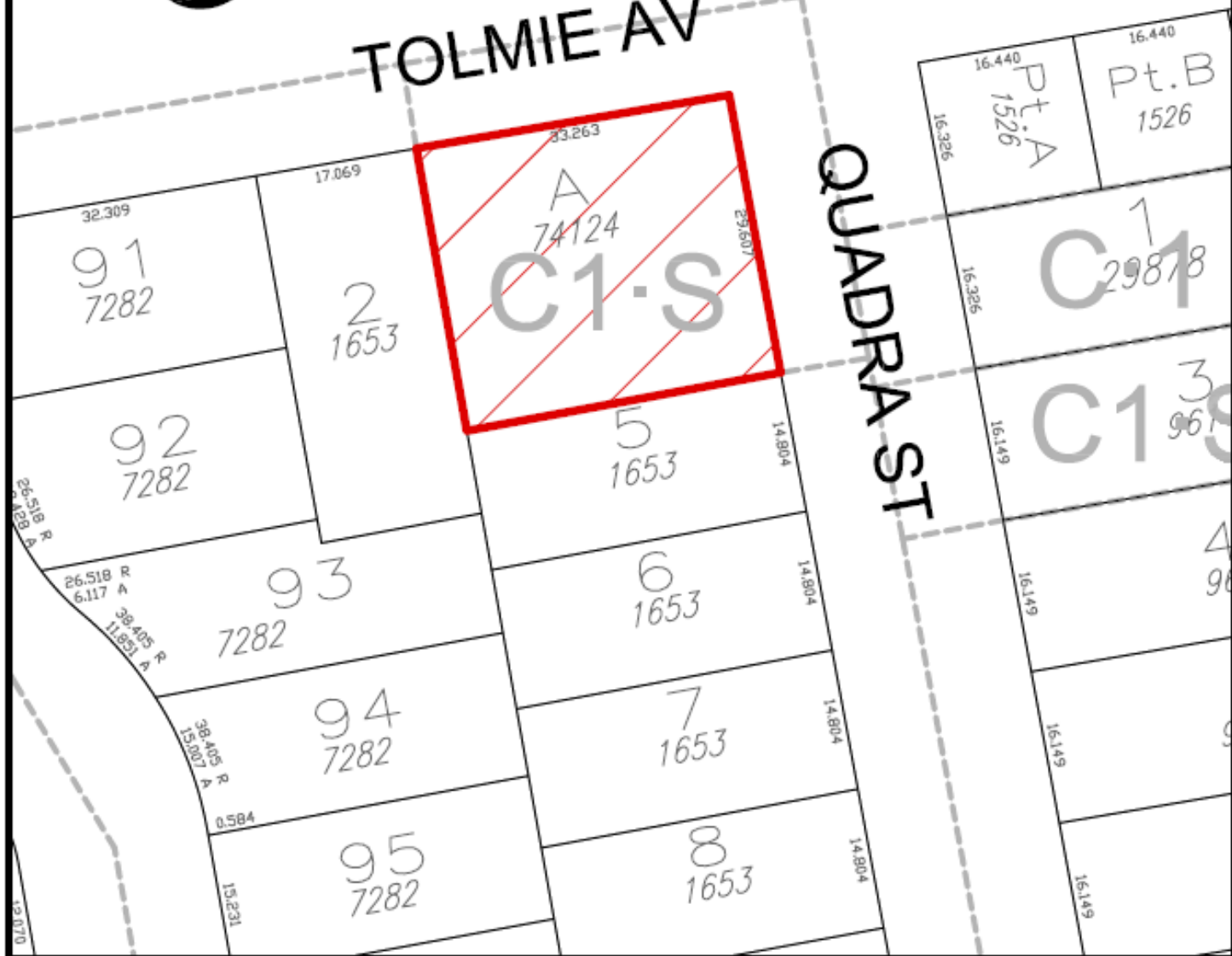
4.110.3 Regulations

- a. Subject to the regulations in this Part 4.110, the regulations in the C1-S Zone, Limited Commercial Service Station District apply in this Zone.

MUNICIPALITY OF SAANICH

TOLMIE AV

QUADRA ST



3198 Quadra Street
Rezoning No.00808

