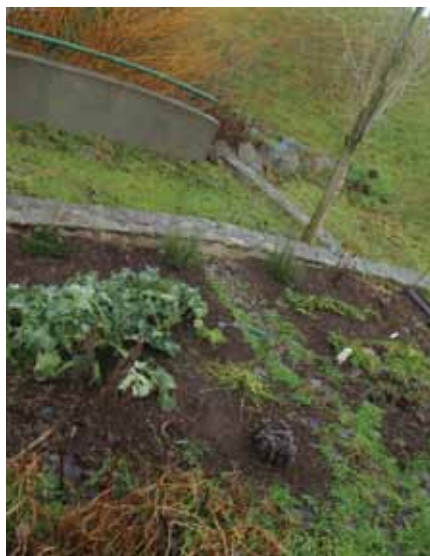




Cecelia Ravine Park Management Plan

MARCH 2011



Council Resolution

MINUTES – VICTORIA CITY COUNCIL

MEETING OF THURSDAY, MARCH 24, 2011, AT 7:30 P.M.

Reports of the Committee

1. **Environment and Infrastructure Standing Committee – March 10, 2011**

3. **Cecelia Ravine Park Management Plan**

It was moved by Councillor Madoff, seconded by Councillor Lucas, that Council approve the Cecelia Ravine Park Management Plan as presented.

Carried

Acting Mayor Thornton-Joe as the liaison to Burnside-Gorge Community Association she would like to pass on their thanks to staff and they are very excited to see the changes.

Motion:

It was moved by Acting Mayor Thornton-Joe, seconded by Councillor Alto, that Council requested that as further details are finalized, that the advisory group be consulted and staff provide more information on the options and rationale on the recommended options as it relates to the bedrock removal.

Carried

Table of Contents

Executive Summary	4
Purpose	5
Planning Process.....	5
Introduction	6
Context	6
Site History	6
Site Analysis	6
Ecology.....	8
Existing Park Facilities.....	8
Developing the Vision.....	10
Public Consultation	10
Survey Results	10
Goals	10
Vision Statement	10
Park Management Strategies	11
Recommendations	11
Site Zoning and Future Park Expansion	12
Objectives	12
Recommendations:.....	12
Management and Restoration of Natural Areas.....	13
Objectives	13
Invasive Species.....	13
Bird Migratory Mud Flat Zone	14
Riparian Zones.....	14
Water Quality	14
Forest Ecology	14
Vegetated Bank Zone	16
Woodland Zone.....	16
Recommendations	17
Managing Community Use	18
Objectives	18
Bike Skills Park.....	18
Community Gardens	19
Playgrounds	20
Sports Court.....	20
Exercise Stations.....	20
Public Art	20
Recommendations	21

Regional Trail Corridor and Park Trails.....	21
Objectives.....	21
Lighting.....	22
Sight Line Improvements.....	22
Safe Connections and Environmental Impacts.....	22
Recommendations.....	23
Operations and Maintenance.....	23
Objectives.....	23
Recommendations.....	24
Implementation.....	26
Resourcing the Plan.....	27
Capital Resources.....	27
Operational Resources.....	27
Acknowledgements.....	28
References.....	28
Appendices.....	29
Maps	
Map 1 Cecelia Ravine Park Overview.....	7
Map 2 Cecelia Ravine Park – Utilities Representation.....	9
Map 3 Cecelia Ravine Park – Proposed Management Zones and Facilities.....	15
Map 4 Cecelia Ravine Park - Napier Lane Concept Plan.....	19
Map 5 Cecelia Ravine Park – Proposed Operational Areas.....	25
Tables	
Table 1 Natural Areas Implementation Schedule.....	26
Table 2 Facilities Development Implementation Schedule.....	26
Table 3 Park Trails Implementation Schedule.....	26
Table 4 Capital Budget Funding Sources.....	27
List of Appendices	
Appendix 1 History of Cecelia Ravine.....	29
Appendix 2 Sampling of Public Survey Results.....	31
Appendix 3 Invasive Species Management Priorities and Suitable Restoration Planting.....	33
Appendix 4 Community Support Letters.....	36
Appendix 5 Pathway Connectivity Improvements.....	40
Appendix 6 Cecelia Creek Section – Gorge to Cecelia.....	41

Executive Summary

Cecelia Ravine is a 3.85 hectare linear corridor that provides leisure opportunities for the local community. It also contains one of the largest natural areas in the City of Victoria park system. The park has several key features which include steep sided ravines, woodland areas, open meadows, a creek, a major regional trail, numerous secondary trails and stairs, three playgrounds and a busy community centre. The Galloping Goose Regional Trail (GGRT) which is managed by the Capital Regional District (CRD) traverses through the park.

Cecelia Ravine Park provides a natural gateway to the Gorge Waterway and to a large part of the City of Victoria. Currently, the park does not meet its potential as a successful public green space due to a number of factors involving maintenance, use patterns, safety concerns, facilities, invasive plants and topographical constraints. Previous development intended to provide space for passive use and enhance the natural environment has not achieved desired outcomes.

The Burnside Gorge Community Centre (BGCC) is a key facility delivering programs for youth and families adjacent to the park. Currently the park is not well used by the community centres resulting in a lost opportunity. The area in the vicinity of the BGCC is also underused and nuisance behaviour detracts from legitimate use. Setting aside open space for proposed facilities such as allotment gardens, a bike skills facility, hard court play surfaces and exercise areas could be developed to encourage destination type visitation. This would clearly benefit the park by encouraging more people to visit for longer periods of time.

Cecelia Creek is surrounded by a natural ecosystem that is plagued with invasive non-native species. Work to improve the ecosystem is important and reflects the City's commitment to our environment and community strategic goals. The foundations for the development and implementation of a detailed natural areas restoration plan are recommended in this plan. They include phased improvements to be undertaken in the next five years as well as suggestions for a 40-year visionary plan to improve water quality.

The Galloping Goose Regional Trail is a major active transportation corridor with connections to the surrounding neighbourhood. Some of the connections could be improved to increase user safety.

This management plan is a community-based project committed to identifying issues and recommending improvements required to create a more successful City park. The focus is on finding a balanced approach to the community's desire for natural areas protection and improved spaces and facilities for legitimate park use. An operations and capital development plan outlines how this can be achieved over the next five years.

Adoption of the plan by City Council will help ensure implementation of the plan recommendations which are designed to ensure long-term viability of the park.

Purpose

The purpose of the management plan is to create a high level, long-term vision for Cecelia Ravine Park. It is reflective of the values in our corporate strategic plan (2011-2012). It sets out specific goals, strategies and recommendations intended to deal with key management issues. These issues relate to the state of the natural environment, built facilities and public amenities, maintenance and social conditions. Some of the specific strategies and recommendations can be implemented with current knowledge and resources. In other cases, more information is required before remedial actions can be undertaken. For example, some of the natural areas have been identified for restoration, however, additional inventory data and detailed restoration plans will be required for specific zones prior to work being undertaken. This work is outside the scope of this plan. In addition, some other recommendations will require additional resources if they are to be acted upon. These are identified in the implementation section of the plan.

Planning Process

Community involvement in the preparation of this management plan started very early in the process with the creation of an ad-hoc public advisory group. The group consisted of representation from:

- City of Victoria Council
- CRD Regional Parks, Park Planner
- Burnside Gorge Community Association
- Burnside Gorge Community Centre
- Wild ARC (wild animal rescue organization)
- Selkirk Place Seniors' Care Residence
- Gorge Waterway Initiative
- Youth Representative
- City of Victoria Staff, Senior Park Planner and Environmental Technician

This group met nine times. Two public open houses and a “trails day” event provided the key opportunities for public input.

Throughout the planning process, information was updated and made available on the City of Victoria website. City Council was also kept informed about plan progress. Council members received a project update in July, 2010. On August 26, 2010, Council authorized the de-construction of the City-owned warehouse building located along the east edge of the park at 3130 Napier Lane. This provided significant new opportunities for the future of the park but also changed the scope of the management plan as well.

More information about the public consultation and survey results is provided in the “Developing the Vision” section of the plan.

Introduction

Context

Cecelia Ravine Park comprises a 3.85 hectare area consisting of Cecelia Ravine Park, Viaduct Park and Cecelia Cove Park. In addition, the Galloping Goose Regional Trail (GGRT), which is owned by the Province of British Columbia and operated by the Capital Regional District (CRD) Parks, travels through Cecelia Ravine Park. See Map 1.

The properties to the east of the park are largely light industrial and warehouse based with the exception of the mixed-use Selkirk development and the Burnside Gorge Community Centre. The western boundary is a mixture of rental apartments and single family dwellings. Burnside Road is the north boundary and Selkirk Waters (Gorge) and Selkirk Trestle form the south boundary.

The Burnside Gorge Community Centre opened in the park in 2007 and today offers a wide variety of programming and community support. With the impending removal of the City-owned warehouse adjacent to this facility a significant opportunity is available to create complementary user facilities to support community centre programming and outreach.

Site History

Cecelia Ravine Park has undergone many changes throughout its history as outlined in Appendix 1. A significant number of projects have been completed in the park since 1993. These are as follows:

- Viaduct Park – Park Covenants EG 154623, 624, 626, 638, 630 from Jawl Holdings. Nov 17, 1993 (301 Gorge)
- The Galloping Goose Regional Trail opened in 1996. This was a significant turning point when public attention began to focus more heavily on this area.
- Selkirk development increased park space and passive areas from 1993–2010
- Cecelia Ravine Park was reserved as Park – bylaw # 78-23 (475 Burnside Road E.)
- Cecelia Cove Park was reserved as Park (1993)
- Cecelia Creek day-lighted in 2000
- Reconstruction of Cecelia Ravine Park in 2002
- Community Centre construction initiated in 2004
- Community Centre opened in 2007

Site Analysis

The two fundamental park management issues involve the state of the natural environment and the relatively low levels of use in the park's ravine system. Both contribute to a public park that experiences poor ecological integrity, high levels of vandalism and low perceptions about public safety. The ecology of the site and existing site features are briefly discussed in this section. The "Park Management Strategies" section explores these issues more fully and presents ideas and recommendations as to what needs to be done to make Cecelia Ravine Park a much more successful and valued park within the Gorge Burnside neighbourhood as well as in the City's overall park system.



CECELIA RAVINE NORTH MEADOW



UTILITY PLAZA

MAP 1 Cecelia Ravine Park Overview



Ecology

The riparian and natural areas in Cecelia Ravine can be discussed as four distinct ecosystems including:

- Inter-tidal Cecelia Estuary bird sanctuary
- Riparian Zone
- Woodland
- Vegetated Banks

The natural areas are plagued by invasive species and heavily disturbed by humans but still provide ecosystems for various flora and fauna. Anecdotal evidence suggests the area has valuable bird habitat. The stream water quality is poor and CRD monitoring data for fecal coliform consistently shows the presence of sewage. The riparian zones and bank ecosystems are degrading because they have not been managed in the context of an urban environment natural area. Overall, significant measures and time will be required to restore Cecelia Ravine Park to a healthy functioning ecosystem.

Existing Park Facilities

The park contains several key features which include a major regional trail, numerous secondary trails and stairs, three playgrounds and a busy community centre. The natural features consist of steep sided ravines, woodland areas, open meadows, and a creek.

The location of the community centre on Cecelia Road complements the park by creating a local focus offering programs for the community. Many of the programs focus on youth and young families. The park is designated as the community park for the Burnside-Gorge neighbourhood but lacks outdoor youth and community facilities, thereby breaking the synergies frequently created when a community centre and major park co-exist. It should be noted that the community centre by virtue of topography, does not have sufficient outdoor space immediately nearby to accommodate passive or active recreation.

The Galloping Goose Regional Trail has led to this park being primarily used as a busy travel corridor.

The GGRT has trail connections into the local community at the following locations:

- Selkirk Area (2)
- Gorge Road
- Cecelia Road
- Burnside Road

It should be noted that the GGRT is owned by the Province of British Columbia and operated by CRD Regional Parks and thus, is subject to its own management plan. There are some recommended improvements identified in this plan that impact the GGRT. They are included here in order to provide guidance to the CRD on ways to improve the trail corridor and will be considered by the CRD separately as part of its planning and maintenance of the trail.

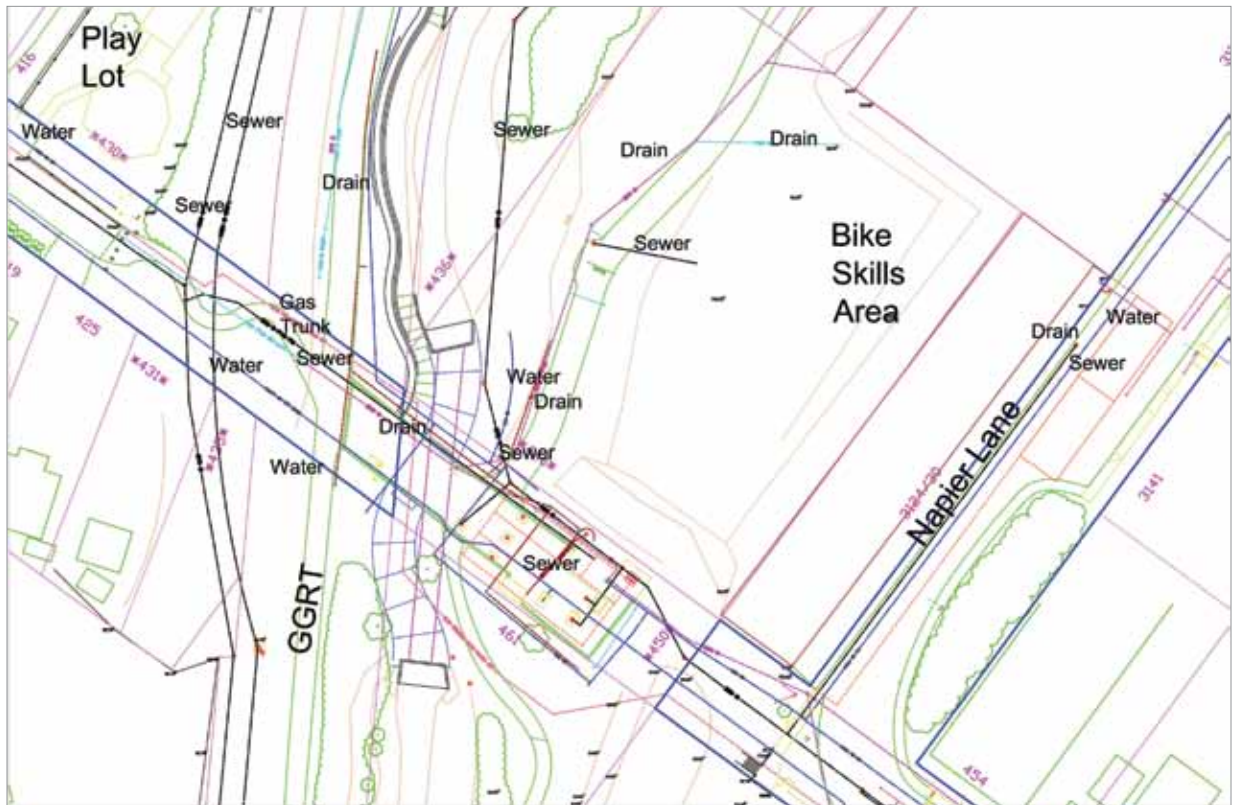
A short walking trail known as the Tom Arkeil Trail follows Cecelia Creek between Gorge and Cecelia Roads. A second main walking trail also exists further north and follows along beside the gabion walls of the creek. This trail has unique interpretative features outlining possible flood water levels on the storm water outlets. Sections of both trails are prone to flooding during storm events and frequently erode into the stream.

The play features in the park include a play area in the former industrial part of Cecelia Cove Park, a traditional playground in Cecelia Ravine Park, and a playground at the community recreation centre (limited public access).

A few passive areas exist in the park and contain basic site furnishings including benches, drinking fountains and garbage receptacles. The 2002 plans for Cecelia Ravine Park were intended to create a passive community gathering space within the context of a large natural area. It also includes a hardscape plaza and amphitheatre and a Garry oak grassland west of the 3130 Napier Lane building. The plaza and gathering areas throughout the Cecelia Ravine and Cove Parks have been used by groups such as Theatre SKAM to produce highly attended interactive plays for the last two years. This is a very positive situation which should be encouraged.

Significant underground infrastructure exists in the park in two main areas. Storm drains, sewers, water mains and other underground services run the length of the GGRT corridor. Other services cross in an east/west direction and continue through the middle of the park under the hard surfaced plaza at the base of the main stairs off Cecelia Road. The underground services combined with constraints from natural features have affected park development in this area. Map 2 outlines the extent of underground services.

MAP 2 Cecelia Ravine Park – Utilities Representation



Developing the Vision

This process evolved over several months and involved many meetings with advisory committee members, gathering and analyzing information from community residents, consulting various stakeholder groups and gathering input from municipal staff.

Public Consultation

There were three main events for the public consultation process. These included:

1. Open House #1 held in April, 2010
2. Trails Day event held in the park in May, 2010
3. Open House #2 held in November, 2010

At the first open house and Trail Day event 63 surveys were returned. The second open house had 123 surveys returned.

A sampling of results is compiled in Appendix 2 and a summary of key findings is outlined below.

Survey Results

Three key recommendations from the advisory committee and first public open house in April 2009 were to:

- Improve secondary trail connections to the GGRT and signage
- Enhance and/or restore natural areas
- Deconstruct the City-owned building at 3130 Napier Lane and identify uses to attract people into the area

Also at the first open house, protection of natural areas ranked number one. Public art, seating, interpretation and providing directional signage were also well supported. Off-leash areas had low support. In terms of destination type activities gardens, bike skills facility, and playgrounds were the three highest with sports courts receiving lower support. The survey results also determined that a farmers market was the highest desired event and the preferred events location was along the waterfront near the Gorge Waterway.

Draft recommendations were presented at the second open house where they generally had high levels of support. Bike skills facilities had the highest support with 91% agreeing to the development of a small off-road bike skills area for youth. Sports courts had the lowest approval rating at 85% which is still considerably favourable.

Goals

As the park planning process progressed it became apparent that four key goals had emerged. These focused on:

1. The removal of invasive species and restoration of natural areas
2. Improved levels of day-to-day maintenance
3. Creation of new facilities and amenities to attract more destination users who visit for longer periods of time
4. Improving secondary trail safety with better intersections and connections to the GGRT

Vision Statement

The Park Vision statement strives to fulfill the four key goals and portrays the park as it exists a few years from now after the management plan recommendations have been successfully implemented. It is essentially a desired end state as to how the park will be perceived and used by residents.

“Cecelia Ravine Park provides a safe and unique natural green space. The busy Galloping Goose Regional Trail corridor is a key public amenity adjacent to the west side of the park. People return to the park to enjoy its restored natural areas and to participate in outdoor recreation. Others visit the park to meet their neighbours, tend garden plots and watch their children play with friends. There is a variety of activities and facilities that keep park visitors interested and engaged and encourage them to visit the park throughout the year.”

Park Management Strategies

Cecelia Ravine Park requires improvements in many areas if it is to better serve the community and provide higher functioning natural areas.

The park management issues can be grouped into five main themes which include:

- Site zoning and property acquisition
- Restoration of natural areas
- Community use
- Park trails and regional trail connections
- Operations and maintenance

With the exception of natural areas and property acquisition, the timeframe for implementation of the park management strategies is five years. Restoration of natural areas is a long-term process that is dependent on many factors including vegetation growth rates and impacts on water quality due to changes in adjacent land use. Property acquisition is dependent on City priorities, available opportunities and funding.

A park management group should be established to ensure the implementation of this plan. The City of Victoria, Capital Regional District, Burnside-Gorge Community Centre, and Burnside Gorge Community Association are four agencies that all have a vested interest in achieving the vision for the park.

Engaging citizens to take “ownership” of the park through partnerships is also beneficial. Many cities partner with non-profit groups and educational institutions to restore natural areas and promote community participation. The City currently has a working agreement with the University of Victoria and frequently works with community groups for invasive species removal programs. Cecelia Ravine once had an environmental group and it would be beneficial to establish a streamkeepers group. Other community groups involved in gardening, cycling, and theatre have all expressed interest in the park with regards to volunteering.

RECOMMENDATIONS:

1. Establish a Cecelia Ravine Park management group that meets three times a year to oversee the implementation of this plan. The group should consist of:
 - City of Victoria Parks – Planner and Manager of Natural Areas and Construction
 - City of Victoria Engineering – Manager of Water and Environment
 - Capital Regional District – Parks Planning Staff
 - Burnside Gorge Community Centre – Executive Director
 - Burnside Gorge Community Association – Land Use Committee Member
 2. Encourage partnerships with the community and educational institutions
-

Site Zoning and Future Park Expansion

Objectives:

- To have consistent park zones
- To consolidate various parcels currently making up Cecelia Ravine Park
- To expand the park to allow for a greater variety of uses

The draft Parks Master Plan recommends that a new City of Victoria land-use zone be created for designation and protection of parklands in the city. Many cities have implemented parks zoning by-laws and they are commonly used as a tool to protect parkland. The parcels currently forming the park have five different zoning designations including M2, R1-B, R3-2, CD-1 and T1 and one development permit area (DPA 16). Consolidation of multiple parcels is also necessary prior to zoning as parkland.

Generally, the Burnside Gorge neighbourhood has a relatively low supply of parkland which was further impacted by the loss of Ellice Street Park in 2008. Acquiring additional land adjacent to the park would allow for a greater variety of uses to support the community centre and local residents. Acquiring a flat area in particular, could provide opportunities for new or expanded youth amenities, perma-culture, orchards or community garden space. Depending on the property, it may also provide opportunities for increased natural areas, habitat expansion and improved water quality in the creek.

RECOMMENDATIONS:

3. Consolidate the City-owned park properties and combine the three separate parks to create a single Cecelia Ravine Park
 4. Support the establishment of a Parks Zoning designation
 5. Consider acquisition of additional adjacent lands to expand the park boundaries
-

Management and Restoration of Natural Areas

Objectives:

- Develop detailed plans for the restoration of natural areas
- Develop strategies to improve water quality to support greater bio-diversity
- Improve bird habitat

Ravines can play a critical role in the protection of natural values in urban areas. Patches of natural environment in urban areas often show a broad range of plant species but do not share the same diversity of other organisms because of the edge-effect. The edges of an area not in a ravine are subject to influences from the adjacent areas; birds, for instance, tend to use only the centres of ecosystem patches, where they are away from predators and human disturbance. Because the edges of a ravine are sharp, the quality of the undisturbed centre is carried right out to those edges, making their effective size much larger than a comparable patch outside a ravine setting.

“Better natural habitat [than that in other urban areas] can be found on the steep slopes of ravines and canyons spared from development. These areas can act as refuge for the original native vegetation of an area. Well known examples of such areas are Rock Creek Park in Washington, D.C., and Fairmont Park in Philadelphia. The ravines and canyons represent hidden natural assets by providing relatively high biodiversity in the heart of residential development.” (Schaefer, V. et al, Urban Biodiversity, Captus 2004). The diversity of bird life in Cecelia Ravine reflects this notion which is surprising given the long history of industrial uses in the ravine.

Beyond the ecological benefits of natural areas, a growing body of research shows that contact with the natural world improves physical and physiological health. Natural areas also provide green infrastructure value and increased property values. A good indicator of sustainable community is one that attempts to restore damaged habitats destroyed during older urban development processes.

The stewardship of natural areas presents opportunities for advanced learning and community projects. Restoration has the capacity to increase the value of place through public participation. If volunteers are trained and provided a rewarding experience, they can be key participants in ensuring the success of a restoration plan. Part of this success relies on reductions or elimination of illegitimate activities such as camping.

Invasive Species

A major component of natural areas restoration is removing invasive species. Invasive species are present in all areas of the park and require major attention and resources. They limit the growth of desirable native species by crowding them out and depriving them of nutrients, water, and light.

A high priority for removal is species known to present hazards to humans or have potential toxic effects on the surrounding ecosystem. These include:

- Laburnum
- Nightshade
- Creeping buttercup
- Poison hemlock

Appendix 3 includes a list of major invasive species to be removed from areas of the park where their impacts are most serious, and a list of wetland and riparian species that would be suitable for replanting in the riparian area. This appendix has been provided to help guide the restoration plan.

Preserving and enhancing the natural areas of Cecelia Ravine will require consideration of the different ecotypes including the bird migratory flats, riparian zones, open woodlands and vegetated banks as outlined on Map 3. It will be necessary to evaluate each ecotype when considering the targets for restoration and the successional processes to achieve them.



CECELIA CREEK

Bird Migratory Mud Flat Zone

The bird migratory habitat on the mudflats of the Gorge Waterway is one of the only mud flats in the City of Victoria. At low tide, a considerable variety of birds can often be found here eating the infaunal invertebrates. Bird predation of invertebrates is intense and significant, particularly at low tides, and certainly plays a role in structuring the inter-tidal mudflat ecosystem.

The natural processes on this mud flat are currently protected by dense vegetation cover on banks that are moderately successful at keeping domestic animals from disturbing the mudflats. It is essential that this protection remains in place and any removal of invasive species would have to be replaced with a native barrier species such as Nootka rose.

Riparian Zones

Water quality and forested bank habitat are the two characteristics that define the Riparian zone shown on the Map 3. Water quality defines stream health. The riparian terrestrial ecosystems are typically important in preserving and maintaining the water quality as well as providing habitat for birds and small mammals. Cecelia Creek headwaters are located in an urban area with a high percentage of industrial use, resulting in poor water quality and highly fluctuating water levels and velocities downstream. Proper restoration over a 40 year planning horizon can make a significant difference to the quality of riparian habitat in Cecelia Creek.

Water Quality

Traditional practices when developing urban areas have been to increase the built environment to an area of low or zero infiltration and to increase the efficiency or speed of water transmission in channels or pipes. Cecelia Creek watershed is an example of this approach and without significant changes to the storm drain system, it will continue to be plagued by high storm water flows with little lag time and low flows during drought periods. Some of the negative effects on the physical characteristics of the stream include inconsistent sediment transport and settling, fluctuating water temperatures, and inconsistent turbidity. Point source pollution from the surrounding community also greatly affects the stream water quality by introducing undesirable organics or toxins. Overall, this results in mediocre stream habitat from a biodiversity perspective.

In recent years, water quality in Cecelia Creek has been improved through work by the CRD, City of Victoria, and District of Saanich, as well as property owners and businesses in the watershed who have reduced contaminants entering the storm water system. Fluctuating levels of contaminants (including fecal coliform, heavy metals and industrial inputs) are being investigated as part of an on-going partnership effort between the CRD, City of Victoria and the District of Saanich. Best Management Practices and Codes of Practice have been developed for a number of industries in the Cecelia catchment area. As a result, property owners and businesses have reduced contaminants entering the storm water system but more work is still required if additional improvements to storm water quality are to be achieved.

A rudimentary survey can be used to evaluate the stream's health. Diatoms (algae slime), invertebrates, molluscs, crustaceans, insects and rooted or aquatic vegetation all have certain species that indicate a stream's general health.

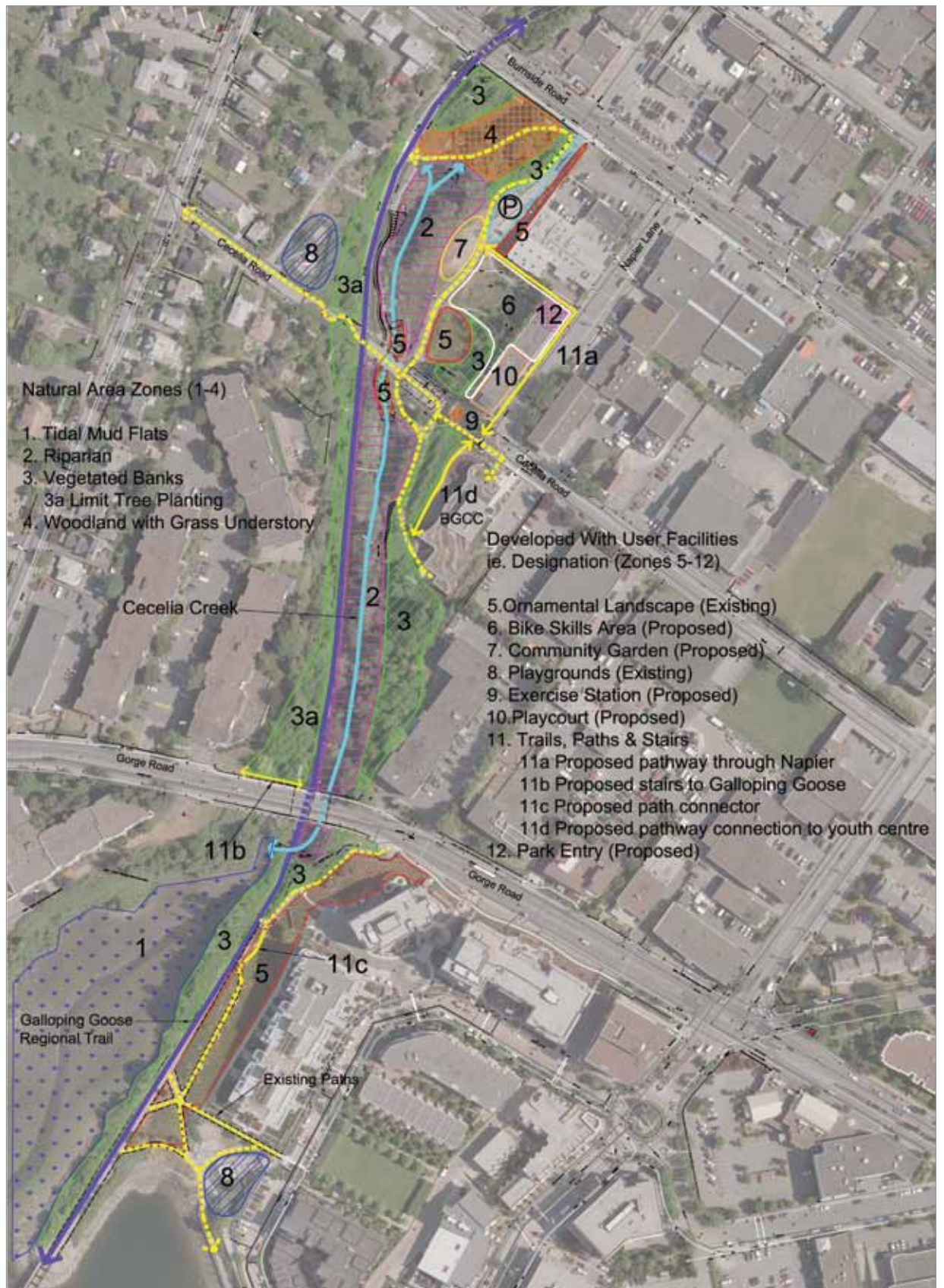
The desired outcome in 40 years for Cecelia Creek is one that has a large variety of organisms with moderate populations. High species diversity is desired but a predominance of any single species is not. A common indicator of a healthy stream is the presence of Stonefly nymph or Mayfly nymph.

Forest Ecology

The forest ecosystem directly adjacent to the stream channel plays a critical role in providing shade for the creek, regulating run-off, and providing natural habitat. Restoring the ecosystem to its pre-contact form is not the goal but rather restoration to ensure the ecological integrity of the natural area is maintained through appropriate ecosystem management within urban areas.

The riparian area between Gorge and Cecelia Roads has the highest density of canopy cover near 100%. The forest type in the area is largely deciduous, dominated by Bigleaf maple, from the mouth of the creek to Cecelia Road. In this type of ecosystem Bigleaf maple can be the primary species in the middle successional stages of coastal Douglas fir forest and it may remain a dominant species in the Maple/Douglas fir seral stage, especially in moist riparian areas.

MAP 3 Cecelia Ravine Park – Proposed Management Zones and Facilities



The area along the steep slopes of the daylighted creek north of Cecelia Road is dominated by low shrubs planted during the 2002 landscaping of the site. Blackberry dominates the east bank above the creek preventing a more diverse range of plants from establishing in the shrub and herb layers. The golden willow, reed canary grass and creeping buttercup are limiting the flow of the creek in sections as well as suppressing the growth of native aquatic plants. The west bank of this section is a gabion rock wall. The vegetation on the wall is sparse and did not meet the expectations of the 2002 landscaping plan. Most notably, trees are absent from this area reducing the level of shade on the creek.

When restoring the forest riparian ecosystems, careful attention has to be given to:

- Competition and survival
- Forest succession
- Disturbance effects
- Spatial variation in the forests

Competition and survival will have to consider understory tolerance, overstory mortality and the transition of trees from the understory to the overstory. Forest succession recognizes and plans for the stages of growth. It is important to remember that recognition of stages is a matter of convenience for planning rather than an actual occurrence.

Limiting disturbance effects in urban parks is challenging but one mechanism is by limiting or preventing human access that negatively impacts sensitive areas near the stream or within the forest. Often human activity creates opportunities for invasive plants to spread and can cause erosion to stream banks and channels.

The desired long-term outcome for the restoration of the forested riparian zone is an invasive species free, Bigleaf maple/Douglas fir forest with a healthy and diverse shrub layer that supports bird habitat. An aggressive herbaceous layer is needed to help control erosion of sensitive creek banks. The shade provided by the large trees will help to improve creek water quality and human access will be limited. Appendix 3 lists some species for restoration consideration.

Vegetated Bank Zone

The vegetated banks along the GGRT are covered with a mix of native and non-native shrubs. Native shrubs including Snowberry, Oceanspray, Salmonberry, Douglas hawthorn, and Willow, are overrun by Himalayan blackberry.

Young Bigleaf maples, Willows, Cascara, Indian plum, Salmonberry, and Thimbleberry are present in the cover along the west side of the GGRT. While many species of birds and insects use the existing mix of vegetation, the native component is being restricted by the density of the non-native material. The banks also contain large underground utilities thereby restricting the type of vegetation that can be planted. Maintaining a treed ecosystem on the bank habitats is not possible.

The desired outcome of the bank habitats is to increase native shrubs on the banks that are beneficial to birds. The plantings should be dense to reduce human disturbance and erosion. Sight lines into the ravine from high use public areas such as parking, playgrounds and buildings should be considered by selecting appropriate shrub species. Trees can be considered where they will not adversely impact existing utilities or sight lines.

Woodland Zone

The area from Burnside Road to the point where the creek emerges from the storm drains is a woodland surrounded by mature Garry oaks and Bigleaf maple, mixed, dense shrubs, and a Himalayan blackberry-covered bank. The ground layer is dominated by non-native grasses. The habitat in this area is marginal at present.

The desired long-term outcome for this woodland is to remove all the invasive species but retain large diameter stemmed trees with an open grass understory. An interpretative trail leading to a spot overlooking the creek would provide a desirable amenity for park visitors interested in getting close to the creek.

RECOMMENDATIONS:

6. Designate Cecelia Ravine Park natural areas as “environmentally sensitive area” to make camping illegal as per Parks Regulation Bylaw, Amendment Bylaw (NO. 2)
 7. Educate the public about the importance of watershed stewardship
 8. In co-operation with the CRD, ensure shore barrier plantings are maintained to prevent disturbance by domestic animals and people around the mud flats in the Cecelia Estuary
 9. Complete a rudimentary survey to determine the biological health of Cecelia Creek
 10. Establish a stream keepers group led by City of Victoria natural areas staff
 11. Natural areas staff are to develop a detailed 40 year visionary action plan to improve water quality in Cecelia Creek
 12. Natural areas staff are to develop detailed restoration plans for the following ecological zones in the park:
 - Riparian areas
 - Vegetated banks
 - Woodlands
-

Managing Community Use

Objectives:

- Identify future uses for the 3130 Napier Lane building site
- Identify specific on-site improvements to encourage broader community use
- Identify improvements to create a safer and more inviting park space

Cecelia Ravine Park, Cecelia Cove Park, and Viaduct Park all provide areas for passive use. There is a concern that apart from the busy GGRT, Cecelia Ravine may have too much passive space resulting in low levels of use. This creates an ideal environment for undesirable activity when combined with other factors such as reduced sight lines, dense areas of vegetation, multiple access points with hidden trails and the general lack of destination visitors in the park. Introducing new uses into the park would be beneficial by bringing more positive activity and visitors to observe and discourage illicit use. It would also complement the many youth services offered at the Burnside Gorge Community Centre.

A Bike Skills facility, community gardens, and exercise stations were the highest valued amenities supported at the first open house. Sited in appropriate locations these new facilities will complement the character and ambience of the park. Appendix 4 includes support letters received from community groups.

Bike Skills Park

Groups interested in promoting cycling in Victoria include;

- The South Island Mountain Bike Society
- City of Victoria Outdoor Recreation Programmer
- Dirty Girlz Bike Club
- Greater Victoria Cycling Coalition (GVCC)

Cyclist groups will be encouraged to participate in the development and maintenance of the bike skills areas.

Currently, no bike skills facilities exist in Victoria, Saanich, or Esquimalt. The regional nature of the GGRT and central location of Cecelia Ravine Park provide an opportunity to develop a facility that promotes safe biking in the region that is easily accessible by City residents without the use of a motor vehicle. It is envisioned that a beginner/intermediate facility for mountain bikers will be created on part of the lands currently occupied by the City-owned warehouse at 3130 Napier Lane and slope adjacent to the SPCA building. Council was receptive to this idea at the July 22, 2010, Governance and Priorities Committee meeting when Parks planning staff briefed them on the proposal.

Many municipalities have mountain bike skills parks that are attractive to all skill levels and ages. A significant amount of research, design guidelines and expertise are available to guide the development of a similar facility. Risk levels can be minimized through proper design.

An opportunity to provide an area for younger cyclists to learn the rules of the road and develop good commuting habits also exists on a portion of the hard surface left behind during the deconstruction of 3130 Napier Lane. An innovative design with input from GVCC, cycling enthusiasts, and public safety groups would be required.

A concept plan that illustrates the proposed layout of the redeveloped space created by the demolition of the warehouse at 3130 Napier Lane is attached as Map 4. More detailed design will be required prior to implementation.

Playgrounds

Cecelia Ravine currently has three play areas. These are located at:

- 400 Block of Cecelia Road
- Cecelia Cove Park
- Burnside Gorge Community Centre

The playground on the 400 block of Cecelia Road will be upgraded within the next couple of years in accordance with the Park's playground upgrade program. The community will be consulted during the planning and design process.

A second play area exists at Cecelia Cove Park and is often used by school children during the day. The play area uses industrial elements as opposed to the more traditional playground. No changes to this playground are anticipated.

A third playground is attached to the community centre but access is limited to programming directed by the centre. The community centre will continue to program and maintain this area.

There are no plans to increase the number of playgrounds in the park.

Sports Court

Hard court surfaces did not rate highly in the first open house of public surveys, however, the youth group at the community centre identified a basketball hoop as a high priority. The court was supported at the second open house by 85% of respondents. The deconstruction of the building at 3130 Napier Lane provides an opportunity to develop a low cost sport court (hockey net and basketball hoop) similar to the court in Banfield Park. The court would be located on the space formerly occupied by the Napier Lane building to avoid removing green space from the park. It will require fencing to enhance safety and function.

Exercise Stations

There are no formal exercise programs that currently take place in Cecelia Ravine but there are exercise camps (boot camps) in the evening and on weekends that use the plaza area and stairs for training. The group sizes range from 4–10 people. Small workout stations would improve the usability of the area and encourage the community to exercise as well. Stations would be similar to those of older circuit training areas found in other urban parks containing a chin-up bar and step-up logs for balance and strength training. These stations should be designed taking into consideration the plaza space and building materials on the stairs and sports court above.

Small exercise stations could be installed north of the plaza stairs on the flat landings. These areas are relatively flat and accessible. A ramp and rope course may also be considered for the slope adjacent to the stairs. However, there are technical issues regarding slope stability, underground services, and vegetation management. This will require further detailed analysis to confirm feasibility.

Public Art

Public art has been supported during the public consultation process as a means to enhance the park and draw more visitors. Probable locations include main entry points into the ravine, along the GGRT, on walls of adjacent buildings (i.e., SPCA) or near the community centre. The area has a rich history of industrial and railway development that could be used as themes for the public art component. The murals under the bridges should continue to be supported and maintained.

Theatre SKAM'S Bike Ride uses Cecelia Ravine Park as a hub to engage audiences as they ride their bikes along the GGRT and watch 9–12 short performances by local artists. These types of community events should continue to be encouraged.

RECOMMENDATIONS:

13. Develop an active youth area on the 3130 Napier Lane site and nearby slope that includes a bike skills facility and multi-use sports court
14. Work with the community to develop a community garden near the Burnside Road parking lot
15. Develop a small exercise station on the flat area near the plaza stair landings
16. Determine the feasibility of a ramp and rope adult exercise station on the slope adjacent to the stairs
17. Upgrade the playground at 400 Cecelia Road
18. Encourage community events near the Gorge Waterway and at the plaza space below the community centre
19. Encourage public art in the park

Regional Trail Corridor and Park Trails

Objectives:

- Ensure safe and convenient connections to the area
- Improve way-finding by use of increased signage
- Promote the Galloping Goose Regional Trail as a successful multi-use trail
- Reduce erosion impacts of park trails on Cecelia Creek

Results from the first open house determined that most people using the park felt safe during the day in the area but not at night. It is important to consider that during the winter months the Galloping Goose Regional Trail corridor is still busy with commuters and park users walking dogs or exercising during dark hours.

Research has shown that the proper design and effective use of the built environment can lead to a reduction in both the opportunity for and fear of crime. A Crime Prevention Through Environmental Design (CPTED) analysis was prepared in 2007 for Cecelia Ravine Park, providing the foundation for many of the recommendations in the management plan.

A number of initiatives intended to improve personal safety could include:

- Improving light levels
- Improving sight lines
- Promoting increased activity
- Achieving an appropriate and consistent level of maintenance

The south end of the park closer to the Gorge Waterway appears to have a greater comfort level with visitors. People generally feel more comfortable in open spaces near large water bodies and shoreline areas. This area is also closer to established residential and commercial properties in an area that is well lit. There is a marked concern about safety especially at the north end of the park closer to Burnside Road.

Use between Gorge and Burnside Roads is mostly within the GGRT corridor and is comprised of commuter and recreational cyclists, walkers, dog walkers and other forms of non-motorized trail users. There is little evidence of regular use of adjacent open space by park visitors and most people choose not to linger in this area. Community feedback and observations indicate the area is poorly maintained and suffers from illegitimate activity.



TRAIL BETWEEN GGRT AND CREEK



TRAIL EROSION

Lighting

Lighting the GGRT may improve user safety by providing more light to see oncoming obstacles. Lighting would be beneficial in the winter during the dark commuting hours and in the summer for service industry workers – many people finish work around 11 p.m. However, the area along the GGRT will still be secluded and attractive for undesirable activity due to the ravine characteristics. Lit areas can attract different types of crime because some light is required for drug injection and transactions. Lights can also create shadow areas for perpetrators to hide in.

The challenge is balancing the needs of the user groups and not promoting additional illegitimate activity. CRD Parks will be the lead agency for any lighting improvements on the Galloping Goose Regional Trail and will consider it in the context of regional trail planning. The CRD will consult with the City and with the Burnside Gorge Community Centre and other relevant community groups on any such developments in this area.

Currently, the connecting trails to the Selkirk development and Burnside Gorge Community Centre are lit. Any new trails to major collection nodes should also consider lighting. For example, the connector trail from the plaza space up to and alongside the SPCA building should be lit to provide consistency.

Sight Line Improvements

The park's dense vegetated areas and ravine topography limit sight lines to adjacent urban areas reducing opportunities for surveillance. This effect is compounded by the existence of the Napier Lane warehouse building which creates a wall between the park and nearby street. As previously discussed, site plans will dramatically improve after the structure is removed.

Better surveillance can be achieved in other areas of the park by selectively reducing the understory as discussed in the natural areas section. The following vegetation reductions should be considered:

- Burnside parking lot bank – Clear rock slope and ensure vegetation is cut back twice a year to be level with parking lot grade. Large stem trees are appropriate
- Playground (400 block of Cecelia Road) – Cut back vegetation particularly on the crest of the slope and replace former hedge with a safety barrier
- Burnside Road/north meadow – Improve site lines on current set of stairs and conduct selective removal of under-story
- Berm between the GGRT and creek – Conduct selective removal of understory and evaluate the potential for possible removal of soil and/or bedrock sections to provide improved sight lines into creek corridor

Safe Connections and Environmental Impacts

As previously discussed, the main circulation route through the park is the Galloping Goose Regional Trail (GGRT). A number of secondary trails intersect the GGRT and provide important connections through the park and to adjacent local streets. Issues regarding unsafe intersections with secondary trails, and lack of connections to roads have been identified and should be addressed as part of future capital work.

When determining priorities for improvements the following criteria were considered:

- Potential for collisions – High
- Impact on stream – High
- Public safety concerns – Medium
- Circulation convenience – Low

Trails impacts on the natural environment also have to be considered. Erosion of the Tom Arkell Trail and Cecelia Creek Gabion Trail has negative impacts on the creek. Due to topographical constraints, any proposed widening of GGRT will be difficult.

Three high priority trail improvements have been identified:

- Gorge Road overpass (southeast intersection with GGRT) – Re-align trail and clear sight lines
- Tom Arkell Trail – Decommission and restore to natural habitat. Designate a new trail in the north woodland zone as Tom Arkell Trail
- Cecelia Road (400 block intersection with GGRT) – Identify surface marking to delineate path crossing

In addition, the CRD should consider widening the GGRT to five metres where possible.

Appendix 5 further outlines trail improvement details and priorities.

A sign plan for the area needs to be developed. Some signage along the GGRT is under the jurisdiction of the CRD whereas other signs fall under the jurisdiction of the City of Victoria. The signage plan should contain different types of signs that address different needs such as wayfinding, identification, regulations and interpretation/education. Currently, there are a number of directional signs that are confusing and should be removed.

The sign plan should also focus on explaining the proper use of park facilities as well as welcoming visitors to the park. One example of improving signage is by using a sign to identify that there is a high use of seniors in the area near Selkirk Place.

The City of Victoria has sign guidelines that will aid in establishing appropriate signage in the park. Any signage considered for the GGRT will be considered in conjunction with the CRD.

RECOMMENDATIONS:

20. Implement the trail recommendations in Appendix 5
 21. Develop and implement a comprehensive signage plan in co-operation with CRD Parks and Greater Victoria Cycling Coalition
 22. Selectively remove under-story vegetation in key areas to improve sight lines
-

Operations and Maintenance

Objectives:

- Develop a feasible operations plan for the management of the park
- Ensure long-term funding is in place to support operations either through increased budgets or re-allocation of existing City resources.

The operations and maintenance plan for this area is perhaps the most crucial element to ensure the future success of the park. In the past, the community has expressed concern that basic maintenance standards have not been met. In recent years some of the areas planned and installed as natural areas have not met with success. Invasive non-native plants have overtaken many natural areas. Some meadow areas have not successfully established and other formal turf areas have become overgrown and are not regularly mown. Many trees which were planted in recent years have struggled to survive and several have failed. Currently, the Parks operations annual cost for maintenance of the park is \$62,300. An additional \$16,000 is spent on maintaining the green roof of the Burnside Gorge Community Centre.

The desired outcome of the operations plan is to create a park space that is equal to other community parks in Victoria. For existing facilities this requires:

- An efficient irrigation system
- Bi-weekly mowing of turf and weed eating during peak season
- Regular garbage and litter pick-up
- Management of invasive species in natural areas based on restoration plans
- Maintenance of in-stream works completed by the City of Victoria Engineering and Public Works Department
- Monthly maintenance of planting beds with new lower maintenance plantings installed
- Timely repair and cleaning of vandalized park infrastructure and facilities including graffiti removal
- Monthly inspection and maintenance of playgrounds and park trails



UNAUTHORIZED GARDENS



GRAFFITI AND WIRE STRIPPING

In the case of new facilities and public amenities, this will require:

- Bi-monthly bike skills area raking and minor repairs (compacted earth structures, wooden jumps, ramps, fencing)
- Routine maintenance of multi-use sports court (hard surface repairs, fencing, backstop) usually completed on a bi-annual basis
- Exercise station monthly inspections and maintenance
- Repair and ongoing maintenance of new trail surfaces as required

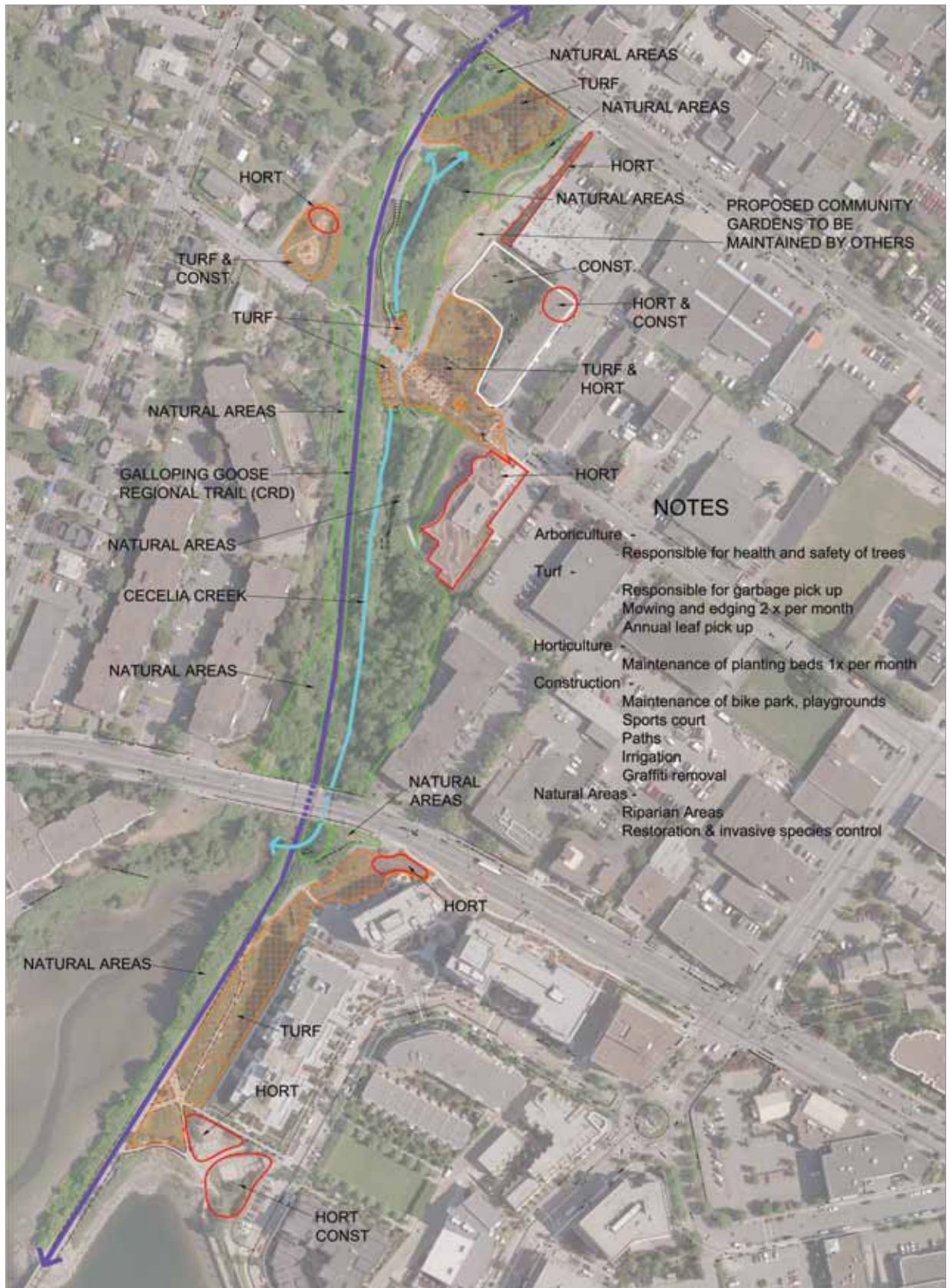
It should be noted that the GGRT, operated by the CRD, has both City of Victoria park furnishings and underground services within its corridor. It is important to establish a clear operations agreement for the corridor to identify the operational areas and assign tasks to be completed by each agency.

The projected annual operating cost to maintain the park and its new facilities to a higher standard is estimated at \$173,000 which also includes the green roof. Most of the projected increase stems from natural areas that include 1,800 man hours of work. This also includes higher arboriculture costs for the maintenance of the trees in the ravine. Parks operations staff are committed to implementing these improvements and Map 5 provides an overview of the tasks.

RECOMMENDATIONS

23. Invest additional staff and funding to address significant short-term problems over the next two years
 24. Commit higher operating funding levels to implement the annual maintenance program outlined on the Map 5
 25. CRD to prepare an operations plan in co-ordination with the City of Victoria for the GGRT corridor
-

MAP 5 Cecelia Ravine Park – Proposed Operational Areas



Implementation

An implementation schedule is essential to meeting the recommendations in a timely and cost effective manner. The tasks can be summarized in three main categories:

1. Natural area restoration
2. Facilities development
3. Park trail upgrades

The following tables outline preferred timelines for implementation and are subject to budget approvals.

Table 1: Natural Areas Implementation Schedule

Task	Year
Invasive Species removal in riparian area	2011
Complete rudimentary survey of Cecelia Creek	2011
Development of specific restoration plan for riparian zone	2011
Begin to implement riparian zone restoration plan between Cecelia Road and Burnside Road	2011
Implement riparian zone restoration plan between Cecelia Road and Burnside Road	2012
Establish stream keepers group	2012
**Restoration plan for vegetative banks	2012
**Implement forested riparian zone restoration plan between Gorge Road and Cecelia Road	2013
**Implement restoration plan for vegetated banks	2013
Develop woodland interpretive area	2014
Replant barrier plantings around mudflats	2015

Table 2: Facilities Development Implementation Schedule

Task	Year
Design and implement bike skills facility	2011
Design and implement sport court	2011
Design and implement Napier Lane connecting path and entry plaza	2011
Improve Cecelia Road playground	2012
Assist community with implementation of allotment gardens	2012
Install exercise stations	2014

Table 3: Park Trails Implementation Schedule

Task	Year
*Cecelia Road 400 block GGRT crossing upgrade	2011
*Install way-finding signage	2012
Install youth centre connector from staircase	2012
Upgrade Gorge Road overpass SE connector	2013
Complete GGRT widening	2013
**Decommission Tom Arkell trail and move to north meadow	2013
*Install staircase on Gorge Road overpass (NW side)	2015

*The CRD is responsible for implementing the improvements to the GGRT and their in-ground infrastructure. Other improvements are subject to partnerships.

**The phasing plan assumes the immediate plans to cover the CRD water main along the west side of the GGRT will be completed by 2012. The phasing also assumes the CRD target date for widening the GGRT is 2013. Detailed restoration plans were not used when determining the estimates. Elements of the phasing plan may have to be re-visited if the CRD improvements are not completed.

The 40 year vision plan for improving water quality in the creek will require considerable research and commitments from a variety of agencies including the City of Victoria, CRD, and the District of Saanich and is not reflected in the implementation schedule.

Resourcing the Plan

Capital Resources

Ongoing implementation of capital improvements over the next five years are to be funded from the budgets approved in the 20 year capital plan. It is anticipated \$855,000 will be required to implement the plan over the next five years. The overall budget includes the following:

1. Natural area restoration (\$440,000)
2. Facilities development (\$290,000)
3. Park trail upgrades (\$122,000)

Engineering has previously committed annual money for in-stream maintenance and this is expected to continue. This work will be informed through restoration plans to be developed as recommended in this plan. The budget for in-stream works will be developed as part of the detailed riparian restoration plan development.

The budget sources listed below are current line items in the 20 year capital plan and are shared amongst many Parks projects. There will be a need for Council and senior parks staff to determine annual priorities.

Table 4: Capital Budget Funding Sources

Budget Line Item	Projected Annual Capital Funding
Natural Areas Management Plan	\$250,000
Urban Forest Management Plan	\$200,000
Park Management Plan Implementation	\$200,000
Play Area and Amenity Upgrades	\$200,000
Park Upgrades	\$200,000

(note: annual budgets subject to change)

Operational Resources

The annual operations budget to maintain this park to the standards outlined and meet community expectations is approximately \$153,000. Existing Parks' maintenance funding and capacity are currently near critical levels. In order to achieve successful implementation of corrective measures to restore and maintain the park to acceptable service levels, additional funding will have to be obtained or existing service levels in other City park(s) will need to be reduced and resources re-allocated.

Other funding sources or ways to reduce costs include utilizing resources not previously dedicated to operations and maintenance of park space:

- Utilize some capital funding to support changes that would reduce future maintenance
- Promote natural areas restoration by volunteer groups
- Reduce planting beds in other City parks
- Reduce mowing frequencies in some other City parks to offset increased mowing in Cecelia Ravine Park

Acknowledgements

Doug DeMarzo, City of Victoria Senior Parks Planner, would like to thank and acknowledge the Cecelia Ravine Advisory Group for their invaluable input:

- Councillor Charlayne Thornton-Joe
- Burnside Gorge Community Association – Kate Forster
- Burnside Gorge Community Centre – Gillian Rowan, Kim Perkins, Suzanne Cole
- Capital Regional District – Leigh Sifton
- Gorge Waterway Initiative – Sara Stallard
- Selkirk Place – Janet Power
- Wild ARC – Christina Carrieres
- City of Victoria – Fred Hook – Environmental Technician

And the following City of Victoria employees for their comments and advice:

- David Speed – Assistant Director – Parks
- Gary Darrach – Manager of Parks Planning and Design
- Todd Stewardson – Manager of Natural Areas and Construction
- Steve Fifield – Engineering
- Michelle Harris – Corporate Communications

References

Chihak, B., Plumert, J., & Ziemer, C. (2010) *Synchronizing Self and Object Movement: How Child and Adult Cyclists Intercept Moving Gaps in a Virtual Environment*. (In Press).

Council Meeting Minutes September 30th, 2004, City of Victoria

Duerkson, C. & Snyder, C. (2005) *Nature-Friendly Communities: Habitat Protection and Land Use Planning*, Island Press

Dune T. & Leopold L. (1978). *Water in Environmental Planning* 16th ed, W.H. Freeman and Company

Higgs E. (2003). *Nature by Design: People, Natural process, and Ecological Design*, Massachusetts Institute of Technology

<http://www.crd.bc.ca/parks/galloping-goose/learn.htm>

Julian A. Reed, Barbara E. Ainsworth, Dawn K. Wilson, Gary Mixon, Annette Cook, *Awareness and use of community walking trails*, Preventive Medicine, Volume 39, Issue 5, November 2004, Pages 903–908

Kaiser E. et al. (1979). *Urban Land Use Planning* 4th ed, University of Illinois Press

Neighbourhood Enhancement Matching Grant, 2009, City of Victoria

Nybakken, J. (1993). *Marine Biology An Ecological Approach* 3rd ed, HarperCollins Publishers

Plumert, J. M., Cremer, J., Kearney, K., Recker, K., & Strutt, J. (2010). *Changes in children's perception-action tuning over short time scales: Bicycling across traffic-filled intersections in a virtual environment*. Journal of Experimental Child Psychology.

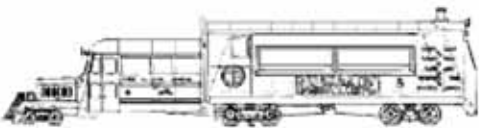

Restoration of natural areas page reference

Spurr, S. (1964). *Forest Ecology*, John Wiley & Sons, Inc

White M et al. *Blue space: The importance of water for preference, affect, and restorativeness ratings of natural and built scenes*, Journal of Environmental Psychology, In Press, Corrected Proof, April 2010

Appendices

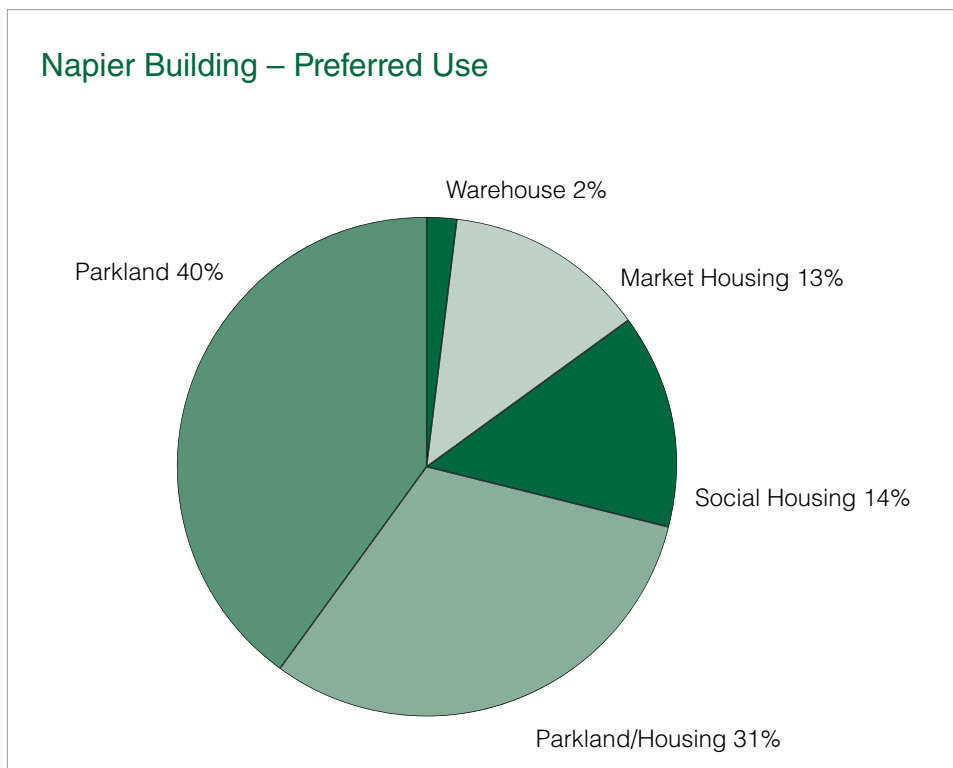
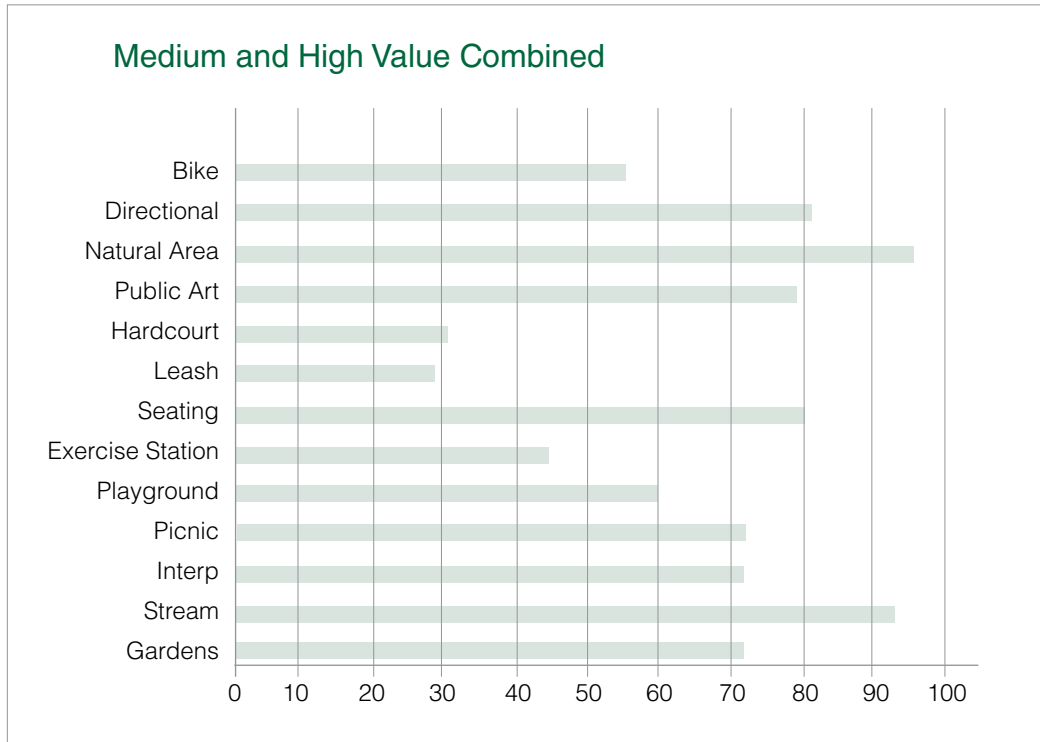
APPENDIX 1 History of Cecelia Ravine

History of Cecelia Ravine	
Pre 1850	First Nations used the area. The creek originally branched south of Burnside with watercourse tributaries that continued up Hillside to where Tolmie and Glasgow Avenues now intersect.
1850 –	Colonial period. The area was part of Hillside Farm, John Work's Victoria farm. Work was a senior Hudson's Bay Company factor. He was one of the largest landholders in the colony and, after his death in 1861, his estate was divided among his children (he had 11 – 3 sons and 8 daughters). Cecelia, whose name is on the creek and ravine, married Charles Septimus Jones. She probably never lived on her land and appears on census records from London, England in 1905.
1907–1919	Cecelia Creek is situated in one of the earliest settled areas of Victoria. Maps show progression of infill of creek to a reduced length of 212 m Trestle across the waterway built in 1918.
1922	First run of the rickety gas-powered train car #15813 on what is now the GGRT. It ran twice daily between Victoria and Leechtown, past Sooke. The car held 30 passengers and was also used for mail delivery for nine years. 
1931	The Canadian National Railway (CNR) ceased operation of the Galloping Goose Rail service after a brief nine-year run when the gold at Leechtown ran out and the town was abandoned.
1989	BCFP Mills. The last major plant on Victoria Harbour was a rambling operation run by B.C. Forest Products, which had taken over several small mills. In the 1980s, it was bought out by now-defunct Fletcher Challenge, a New Zealand-based giant, and continued to produce plywood, presto logs, and other commodities until the parent company decided to shut it permanently. <p>Then the saws stood still and the smoke that constantly filled the air was gone. Deconstruction of the site began in 1989, but a few reminders of the old plant have been incorporated into the walkways and landscaping around Selkirk Waterway, the residential and office complex developed by Jawl Holdings.</p>  <p><small>Courtesy of BC Archives collection - Call Number: M0-0476 http://www.bccanada.com/BCArchives Email: access@bc.archives.gov.bc.ca © - Provided for Research Purposes Only - Other Use Requires Permission</small></p> <p><small>Title: Bc Forest Products Sawmill Victoria</small></p>
1992	Galloping Goose Regional Trail opened alongside Cecelia Creek.
1995	Severely damaged in a fire in 1995, the Selkirk trestle was rebuilt

History of Cecelia Ravine	
1997	Restoration of Selkirk Trestle. The opening of the Galloping Goose may be seen as the most recent turning point when the public attention began to focus on this area.
2000	An additional 133 m of Cecelia Creek was daylighted. Cecelia Cove Park was redeveloped.
2002	Changes to Cecelia Ravine Park were undertaken creating an amphitheatre, water elements, enhanced paving and connection improvements. The intent of the plan was to create a community gathering area and passive space for relaxation. As a result of low use and poor maintenance, the park never met the expectation of the design. Instead, the ravine type area become widely used by individuals for camping and undesirable activities such as wire stripping.
2004	Burnside Gorge Community Centre received Council approval for construction. Approval to demolish the building located at 3130 Napier Lane was also granted. Community Garden removal took place for the construction of the Burnside Gorge Recreation Centre.
2007	Opening of Burnside Gorge Recreation Centre. The construction of the centre did not change the function of Cecelia Ravine Park. Currently no annual programming in the park takes place. However, the construction of this building creates a destination requiring better access to the neighbourhood on the west side of the ravine.
2008–09	Community meetings to discuss improvements to space focused on maintenance and security. CRD Water proposes to protect their 1060 mm pipe that runs parallel along the west side of the GGRT. Part of this proposal also considers widening the Galloping Goose to five metres by raising the trail bed. Grant for \$5,000 received by Burnside Gorge Community Association for creation of new Community Garden. Completion of the lineal park between Viaduct Park and Cecelia Cove Park.

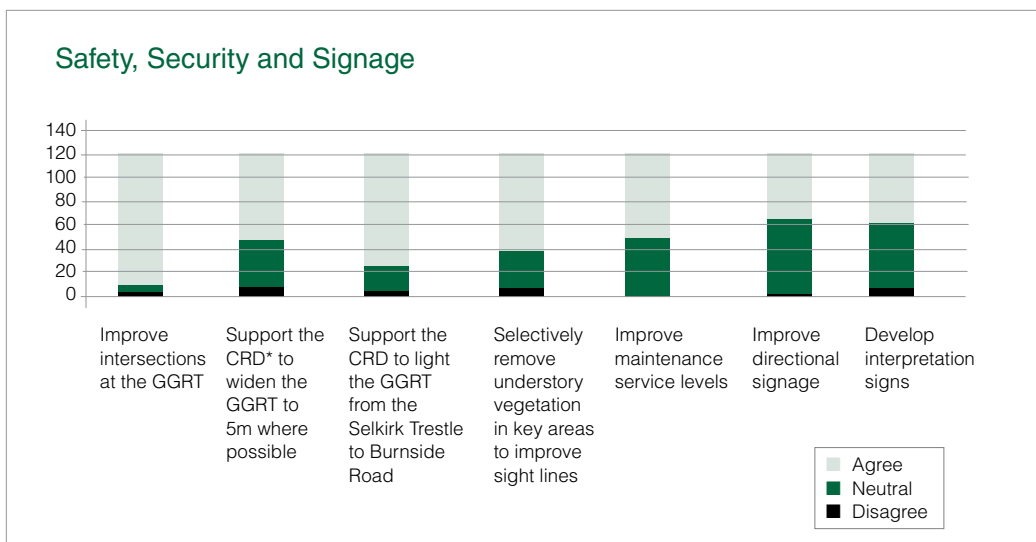
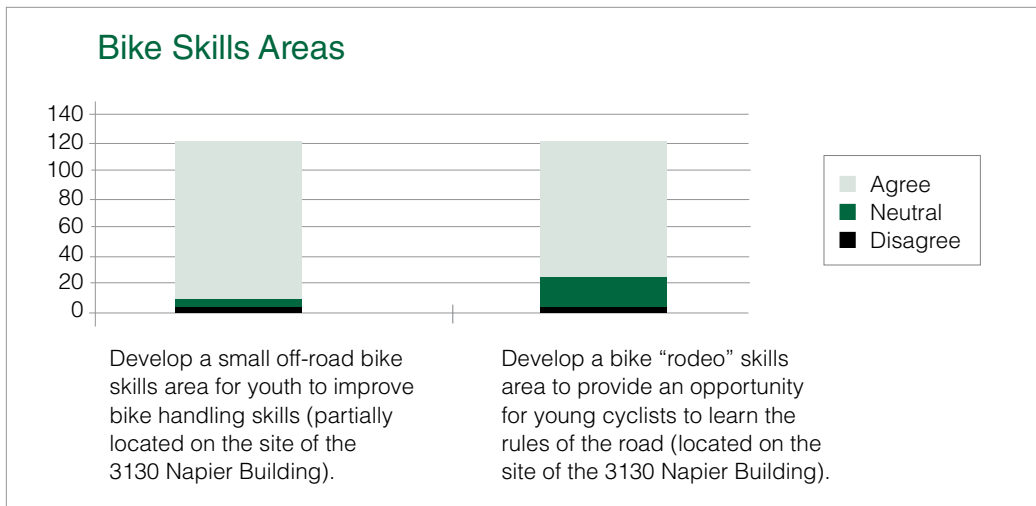
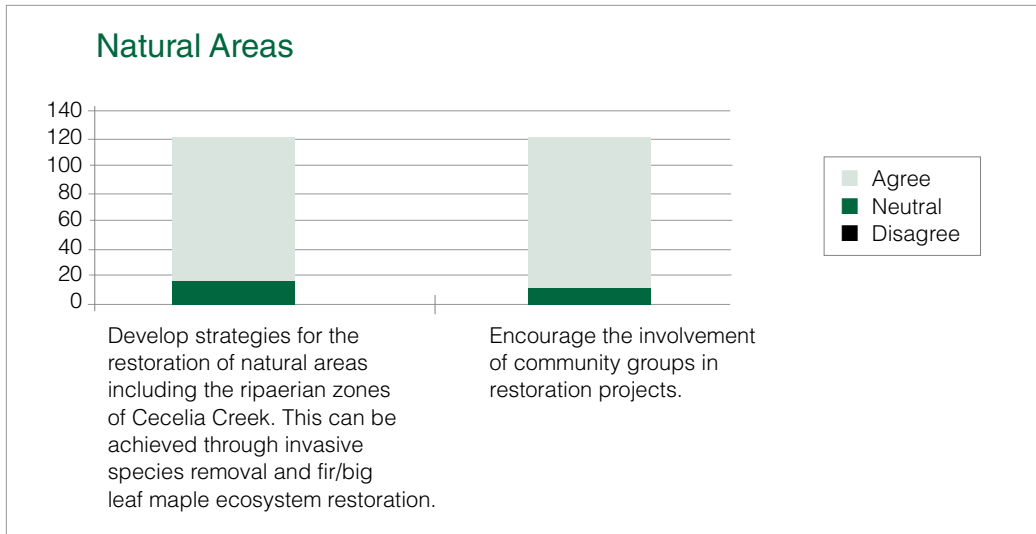
APPENDIX 2 Sampling of Public Survey Results

Open House 1



APPENDIX 2 Sampling of Public Survey Results

Open House 2



APPENDIX 3 Invasive Species Management Priorities and Suitable Restoration Planting

Plant name	Park area	Detrimental effects	Restoration objectives	Priority
Laburnum	Streambanks between Cecelia Road and Gorge Road	Toxic seeds Nutrient balance change (Nitrogen fixer) Shade Visual block	Allow more light to reach the understory. Open visual lines.	High
English Hawthorn	Entire park	Competes with native vegetation for light and nutrients. Visual block.	Allow more light to reach the understory. Open visual lines.	Low
Holly	Entire park	Blocks light from understory and herb layer. Heavy water user.	Allow more light to reach the understory. Open visual lines.	Medium
Ivy	Cecelia to estuary	Competes with native vegetation for light and nutrients becoming a monoculture. Visual block damages native trees.	Allow for more diverse plant community. Protect native trees and shrubs.	Low
Travellers' Joy clematis	Cecelia to Gorge	Competes with native vegetation for light and nutrients becoming a monoculture. Visual block damages native trees.	Allow for more diverse plant community. Protect native trees and shrubs.	Medium
Nightshade	Length of exposed stream	Potentially toxic fruit. Competes with native vegetation. Clogs waterway.	Improve stream banks and waterflow.	High
Blackberry	Entire park – especially riparian zone and banks	Fruit attracts rodents. Competes with native vegetation for light and nutrients. Damages streambanks. Shades understory. Visual block.	Improve stream banks and water flow. Allow for more diverse native understory.	Medium
Reed Canary Grass	Stream bed	Chokes out all other vegetation. Impedes water flow.	Improve stream banks and water flow. Allow for more diverse native aquatic vegetation. Allow for more diverse native aquatic vegetation	Medium
Creeping buttercup	Stream bed	Potential toxic roots. Chokes out all other vegetation.	Impedes water flow. Improve stream banks and water flow. Allow for more diverse native aquatic vegetation.	High

Plant name	Park area	Detrimental effects	Restoration objectives	Priority
Poison hemlock	Entire park	Toxic in all parts	Remove human health hazard.	High
Thistles	Cecelia Road to Burnside Road	Chokes out native vegetation.	Improve diversity of herbaceous layer.	Medium
Oyster plant	Cecelia Road to Burnside Road	Chokes out native vegetation.	Improve diversity of herbaceous layer.	Low
Golden Willow	Cecelia Road to Burnside Road	Shade impedes water flow.	Improves stream banks and water flow.	Low

Suitable Restoration Planting

The following is a list of wetland and riparian species that would be suitable for replanting in the riparian area. The highlighted species are already established in the park.

Trees

<i>Acer glabrum</i>	Douglas maple
<i>Acer macrophyllum</i>	Bigleaf maple
<i>Alnus rubra</i>	Red alder
<i>Crataegus douglasii</i>	Black hawthorn
<i>Malus fusca (Pyrus fusca)</i>	Pacific crab apple
<i>Prunus emarginata</i>	Bitter cherry
<i>Pseudotsuga menziesii</i>	Douglas-fir
<i>Quercus garryana</i>	Garry oak
<i>Thuja plicata</i>	Western red cedar

Tall Shrubs

<i>Amelanchier alnifolia</i>	Saskatoon berry
<i>Cornus stolonifera</i>	Red-osier dogwood
<i>Lonicera involucrata</i>	Black twinberry
<i>Oemleria cerasiformis</i>	Indian plum
<i>Physocarpus capitatus</i>	Pacific ninebark
<i>Philadelphus lewisii</i>	Mock orange (coastal)
<i>Rhamnus purshiana</i>	Cascara
<i>Rubus parviflorus</i>	Thimbleberry
<i>Rubus spectabilis</i>	Salmonberry
<i>Salix hookeriana</i>	Hooker's willow
<i>Salix lucida (lasiandra)</i>	Pacific willow
<i>Salix scouleriana</i>	Scouler's willow
<i>Salix sitchensis</i>	Sitka willow
<i>Sambucus racemosa</i>	Red elderberry
<i>Sorbus sitchensis</i>	Sitka mountain ash

Medium and Small Shrubs

<i>Spiraea douglasii</i>	Hardhack
<i>Mahonia nervosa</i>	Dull oregon grape
<i>Ribes sanguineum</i>	Red flowering currant
<i>Rosa nutkana</i>	Nootka rose
<i>Symphoricarpos albus</i>	Common snowberry

Ferns

<i>Athyrium filix-femina</i>	Lady fern
<i>Blechnum spicant</i>	Deer fern
<i>Polystichum munitum</i>	Sword fern
<i>Pteridium aquilinum</i>	Bracken fern

Aquatics

<i>Alisma plantago-aquatica</i>	Water-plantain
<i>Carex mertensii</i>	Merten's sedge
<i>Carex lyngbyei</i>	Lyngbei's sedge
<i>Carex obnupta</i>	Slough sedge
<i>Carex rostrata</i>	Beaked sedge
<i>Carex sitchensis</i>	Sitka sedge
<i>Carex stipata</i>	Sawbeak sedge
<i>Eleocharis palustris</i>	Common spike-rush
<i>Juncus effusus</i>	Common rush
<i>Juncus ensifolius</i>	Dagger-leaf rush
<i>Menyanthes trifoliata</i>	Bog or buck bean
<i>Oenanthe sarmentosa</i>	Pacific water-parsley
<i>Polygonum amphibium</i>	Water smartweed
<i>Sagittaria latifolia</i>	Wapato, arrowhead
<i>Scirpus shoenoplectus</i>	Hard-stemmed bulrush
<i>Scirpus microcarpus</i>	Small-flowered bulrush
<i>Typha latifolia</i>	Cattail

Groundcover

<i>Arctostaphylos uva-ursi</i>	Kinnickinick
<i>Fragaria chiloensis</i>	Coastal strawberry

APPENDIX 4 Community Support Letters

TO:

Doug DeMarzo
Parks Senior Planner
City of Victoria
1 Centennial Sq. Victoria, BC V8W 1P6
(sent by email)

Dear Doug,

I am writing on behalf of the Burnside Gorge Community Association to express support for designating a portion of Cecelia Ravine Park as suitable for a community allotment garden. Our neighbourhood does not currently have any allotment gardens that are open to all community residents. There are many multiplefamily dwellings in our area, and very limited opportunities for families and individuals to garden.

In mid-2008, I wrote an article in the Burnside Gorge newspaper, seeking interest from the community for volunteers to help in identifying, planning and implementing a community garden. Since that time, more than 15 people have directly contacted the Association to express interest and to assist in preliminary planning. In addition, participants at community meetings held by the Parks department in the past year - as part of the parks master planning process and the Cecelia Ravine Management Plan - have also identified the desire for a community garden as a high priority.

Our most significant challenge has been to identify land on which a garden might be constructed in an area that was central, accessible and suitable. I was pleased to meet with you in June and learn that space for a community garden was being considered for Cecelia Ravine Park in the Napier land area. We would be very happy to work closely with the Parks department on the design and implementation of a garden in that area, including providing contributions to acquire some of the garden infrastructure (such as raised beds) as well as volunteers to help build the garden.

We hope that a community allotment garden will be recommended as part of the revised Cecelia Ravine Management Plan and that the initiative will be approved by the Victoria City Council. We look forward to working with you. Please let me know if there is anything that I can do to assist.

Best regards,

Tracy James
Chair, Burnside Gorge Community Association

cc: Charlayne Thornton-Joe, Council Liaison
cc: Vickie Jackson, Land Use Chair
cc: Suzanne Cole, Executive Director
cc: Kim Perkins, Community Development Coordinator

H 250.598.9833
W 250.387.9644
C 250.882.4074
tracyjames@shaw.ca



South Island Mountain Bike Society
PO Box 8145,
Victoria, BC V8W 3R8
www.simbs.com

Re: Bike skills park proposal in Cecilia Ravine Park

I am writing on behalf of the South Island Mountain Bike Society (SIMBS) to endorse the Victoria Parks proposal for a mountain bike skills park in the Cecilia Ravine Park. The proposed mountain bike facility is located in an ideal location next to the Galloping Goose and it would be easy for youth to get to the park by bicycle. This location would also benefit from a legitimate user group that would help reduce crime and nuisance behaviour in the area.

SIMBS has a longstanding partnership with CRD parks to help build and maintain the mountain bike trail facilities at Mt. Work Hartland. SIMBS is skilled in the construction, design, and maintenance of mountain bike facilities. SIMBS would be interested in helping Victoria Parks with the planning and design of the proposed bike facility in Cecilia Ravine and potentially organizing volunteers to help with the construction of the park. We are open to discussion on all aspects of the park.

Sincerely,

Scott Mitchell, SIMBS President

APPENDIX 4 Community Support Letters

Re: Bike skills park proposal in Cecilia Ravine Park

The Dirty Girlz Bike Club strongly supports the Victoria Parks proposal to build a mountain bike skills park in the Cecilia Ravine Park. The proposed facility would be a great addition to our community. Many women and their families would benefit from building mountain biking skills together. The proposed facility would provide a place where all levels of riders could learn the skills necessary to enjoy our local mountain bike trails with confidence.

Since 2001, the Dirty Girlz Bike Club has been committed to introducing women to the growing sport of mountain biking. Our annual membership ranges from 30-50 women and includes women with a wide range of skills and experience. We have found that having the opportunity to gain skills and confidence on a mountain bike has contributed to the overall quality of life for many women. An important part of the learning process is having a controlled environment in which to practice. A skills park like the one proposed for Cecilia Ravine would provide just such an environment.

Alongside the South Island Mountain Bike Society, the Dirty Girlz Bike Club is willing to volunteer with the construction of the park. We are happy meet with you to discuss our support for the proposed skills park.

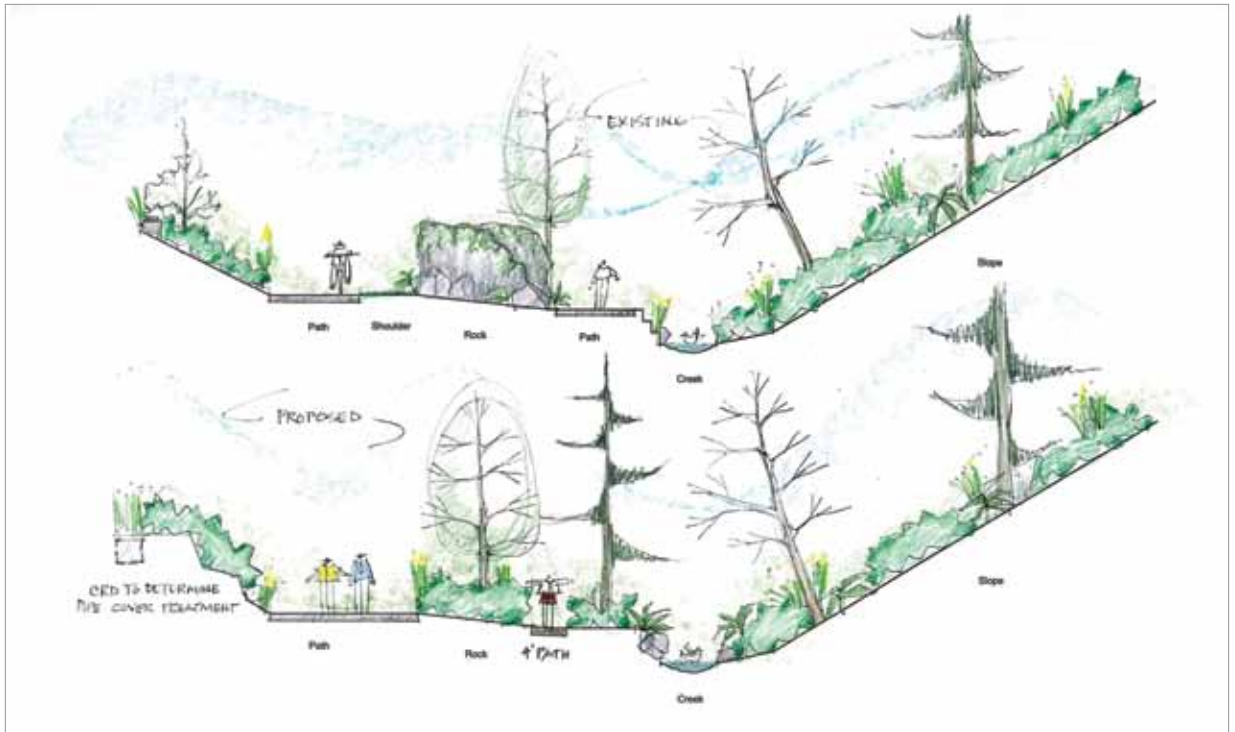
Sincerely,

Carmel Ecker,
Dirty Girlz Bike Club President

APPENDIX 5 Pathway Connectivity Improvements

Area	Map Ref	Recommendation	Priority	Cost \$
Tom Arkell Trail		Two options 1) Decommission entire trail and restore to natural habitat and remove berm. Re-designate north woodland trail as Tom Arkell Trail. 2) Decommission southwest portion of trail and create new connection further to the north that crosses creek to meet current northeast entrance (maintain portions of the berm).	High	50,000
Cecelia Rd 400 Block (CRD)		Modification of GGRT surface treatment in critical areas. For example, create stamped asphalt area at intersection of GGRT and trail.	High	unknown
Cecelia Rd staircase to teen centre		Install path from the mid-stair landing to connect to teen centre at the community centre. Evaluate ambient lighting.	Med	12,000
Cecelia Creek Gabion Trail		Refer future to restoration plans. Trail surface can be downgraded to informal trail or upgraded to boardwalk.	High	unknown
3130 Napier building		Install path with suitable grades to connect Burnside parking lot to Napier Road along side the SPCA at a minimum of 1.8 m (six feet). Consider lights.	Med	20,000
Gorge Road overpass (southeast)		Ensure Arbutus remains trimmed to improve sight lines. Connect the existing path to the path in the corridor between Viaduct Park and Cecelia Cove.	High	8,000
Gorge Road Overpass (NW)		Provide stairs to connect to Gorge Road. Consider lights. Work with CRD.	Low	50,000
GGRT (CRD)		Widen the GGRT to a minimum of five metres width where feasible.	High	unknown
GGRT (CRD)		Install road name markers on underpasses. Provide etiquette and way-finding signage.	Low	unknown
GGRT to Arbutus Park		Will remain an implementation action as part of the 2003 City of Victoria Greenways Plan.	Low	unknown
Cecelia Road Greenway Connection		Will remain an implementation action as part of the 2003 City of Victoria Greenways Plan.	High	\$185,000

APPENDIX 6 Cecelia Creek Section – Gorge to Cecelia




February, 2011 Scale 1:100



1 Centennial Square
Victoria, British Columbia
V8W 1P6

www.victoria.ca

 PRINTED ON RECYCLED PAPER
OCT 2011 | P1_X_PS