

Considerations for Linear Parkway Locations

Opportunities and Prioritization

Reimagining Our Largest Public Asset—Our Streets—in Support of the Needs of Victoria

The OCP update presents an opportunity to gather ideas and understand priorities for how we identify locations for linear parkways in the future. Nearly a quarter of Victoria’s land base is public right-of-way. The paved spaces reserved for the movement and storage of private vehicles is costly to maintain and there is an opportunity to make the most of this space to improve road safety, ecology and public space outcomes.

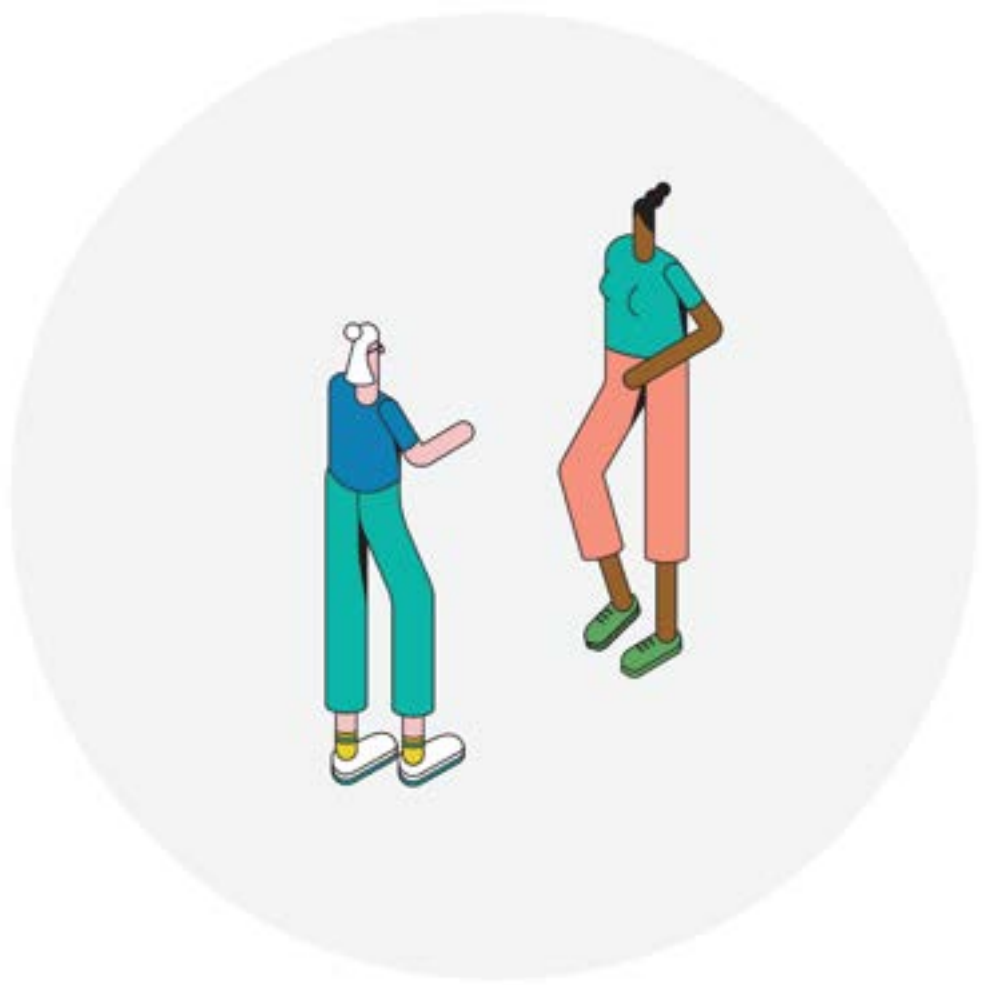


Relates to Survey Questions 12-13

Question numbering may be one higher if you got a follow up question in the housing section.

Equitable Access:

Prioritize locations which currently have poor access to outdoor amenities and overlapping equity considerations.



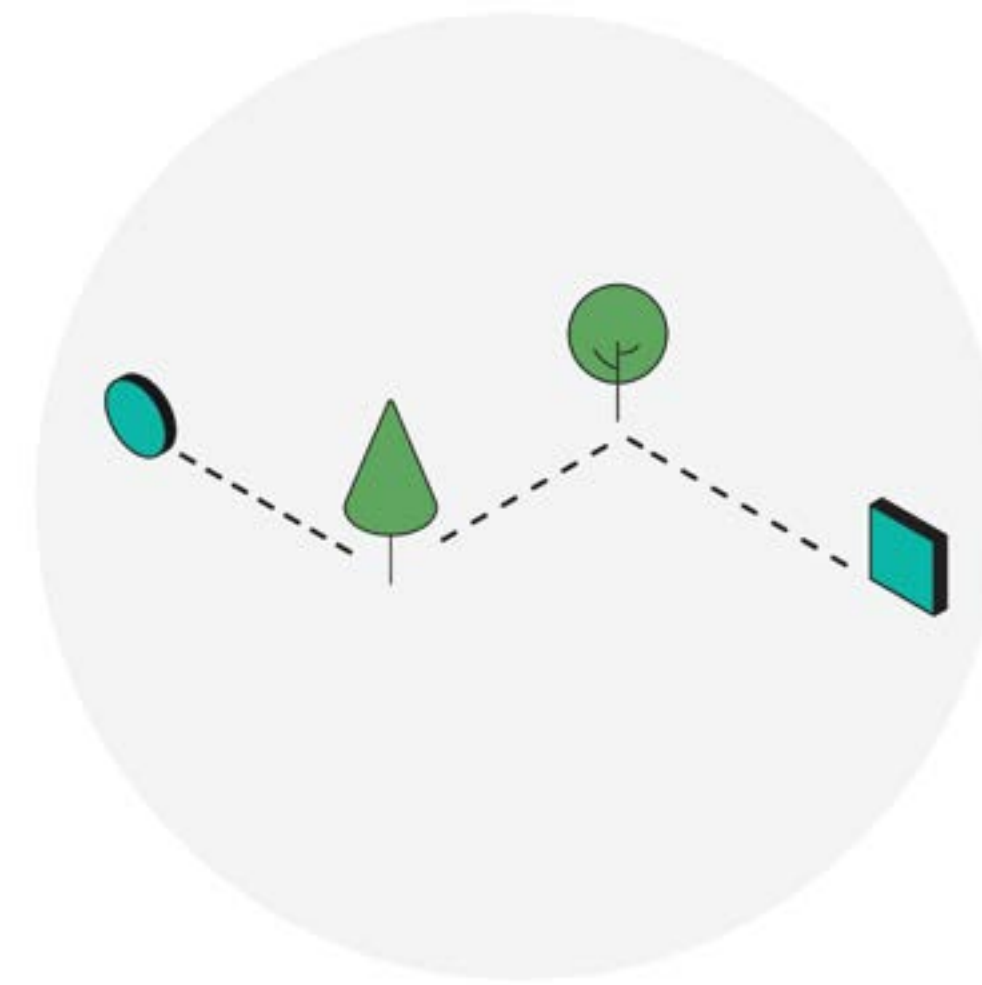
Active Transportation Routes:

Consider locations along existing and planned active transportation routes.



Adjacent to Community Spaces:

Consider locations that expand and connect existing parks, schools and community spaces.



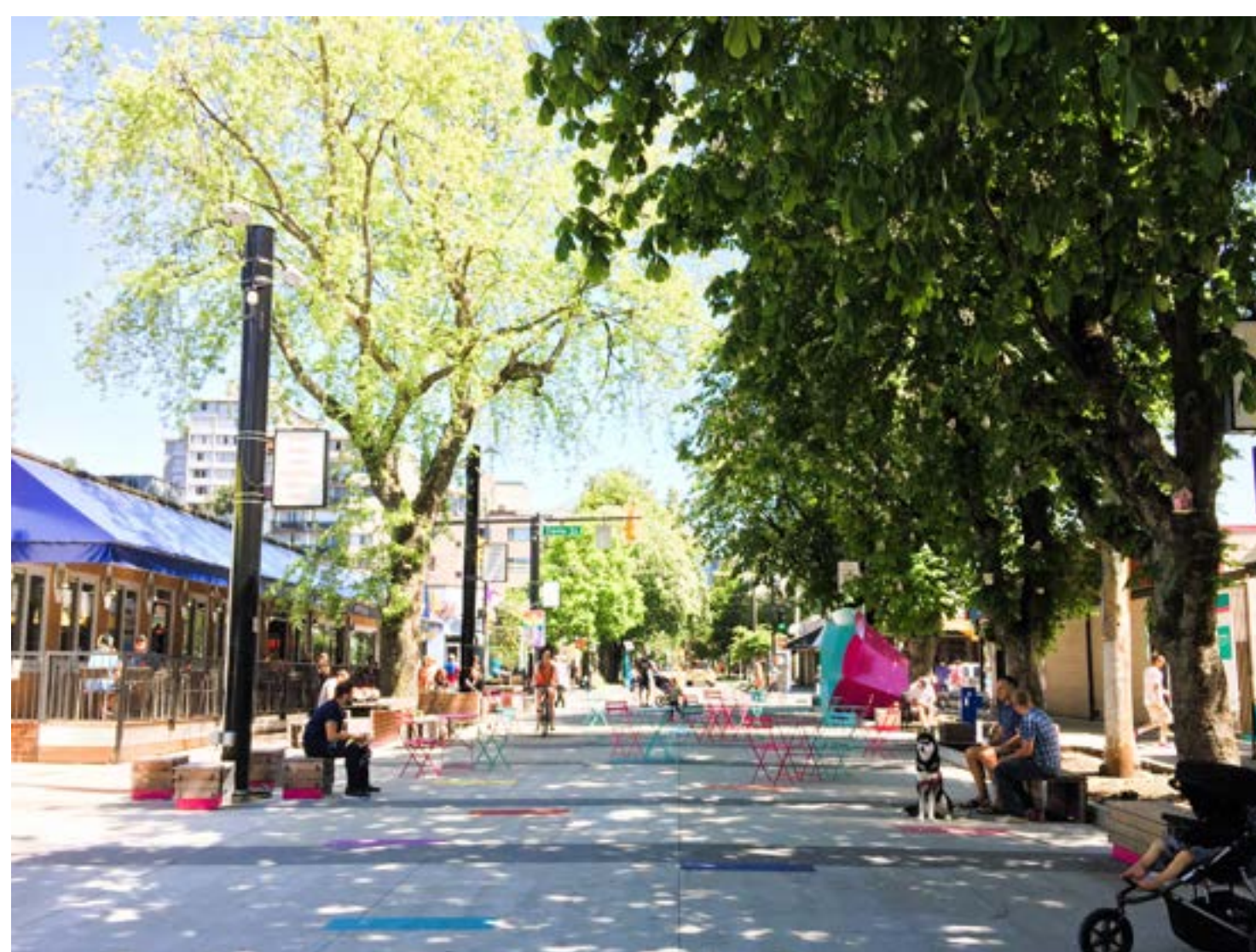
Urban Forest:

Consider locations where there are opportunities to enhance and celebrate the urban forest.



Strengthening Villages:

Pedestrianizing part of the street to create plazas can create a focal point and enhance villages.



Jim Deva Plaza, Vancouver
(photo credit: City Staff)

Healthy Watersheds and Creeks:

Design spaces to promote watershed health, celebrate our historic waterways and mitigate flood risk.



Rainway on Prince Edward Street, Vancouver
(photo credit: City of Vancouver)

Green Laneways:

Naturalized spaces slow down traffic, help rainwater soak in and make room for activities on shared lanes.



A naturalized green laneway in Vancouver
(photo credit: BC Active Transp. Design Guide, 2019)

Large Boulevards:

Supersized street boulevards and medians present opportunities for urban parks and plazas.



Place d'Youville, Montreal
(photo credit: Denis Farley)

Other Intact Corridors:

Utilizing existing corridors like rail right of ways for the highest and best use while retaining space for future public transportation presents opportunities for new or improved linear parkways.



Somerville Community Path
(photo credit: Commonwealth of Massachusetts)



**In new linear parkways,
I want to prioritize...**

Thinking about where to locate linear parkways, what other opportunities or considerations can you think of?