



PUBLIC REALM DESIGN GUIDELINES FOR VILLAGES AND TOWN CENTRES

November 2025

PUBLISHING INFORMATION

Title: Public Realm Guidelines for Villages and Town Centres

Author: Citywide Planning Division

Status: Updated and Adopted January 2026

Printing Date: November 2025

Disclaimer: This Guideline may be subject to periodic updates and amendments. Please contact the City of Victoria Citywide Planning Department for up-to-date information.

Additional Copies: The City of Victoria
Citywide Planning
Victoria City Hall, 2nd Floor
T 250.361.0382

Electronic versions (in PDF format) available on the City of Victoria website at www.victoria.ca

CONTENTS.

1 INTRODUCTION	1
1.1 ABOUT THE GUIDELINES	1
1.2 ABOUT THE VILLAGES	1
1.3 PURPOSE AND USE	2
2 DESIGN PRINCIPLES AND STRATEGIES	3
2.1 DESIGN PRINCIPLES	4
2.2 DESIGN STRATEGIES	5
3 GENERAL STREETScape GUIDELINES.....	6
3.1 LAYOUT OVERVIEW.....	7
3.2 CORNER AND MID-BLOCK BUMP-OUTS.....	8
3.3 PAVING MATERIALS AND LAYOUT.....	9
3.4 STREET TREES AND RAIN GARDENS	10
3.5 FURNISHINGS AND PEDESTRIAN LIGHTING.....	12
4 VILLAGE-SPECIFIC GUIDELINES	15
4.1 OVERVIEW.....	17
4.2 QUADRA VILLAGE.....	17
4.3 COOK STREET VILLAGE.....	18
4.4 FERNWOOD VILLAGE.....	19
4.5 WATERFRONT VILLAGES.....	19
4.6 A NOTE ON NARROW SIDEWALKS.....	19
4.7 PLACEMAKING.....	20
5 STREETScape ELEMENTS CATALOGUE	21



PART 1

INTRODUCTION

1 INTRODUCTION

1.1 ABOUT THE GUIDELINES

The Villages and Town Centres Public Realm Design Guidelines provide general guidance on the layout, materials and furnishing intended for the public realm in designated Villages and Town Centres throughout the City. These guidelines are intended to be used alongside other key City bylaws and documents noted in Section 1.3. They form part of the development approvals process and guide frontage improvements. In addition, they help direct City capital projects.

The guidelines seek to balance the needs of all users with a particular focus on high-quality pedestrian environments. This supports the long-term vision of mixed-use, walkable, and socially vibrant neighbourhoods, villages, and town centres established by the Victoria 2050 Official Community Plan (OCP).

A high-quality and accessible public realm is essential to achieving an active and welcoming neighbourhood experience. It supports pedestrian, social activity and public gathering. It can also encourage people to use sustainable transportation modes such as walking, cycling, and transit. This is achieved by offering improved connections between places and making those connections into memorable spaces.

1.2 ABOUT THE VILLAGES

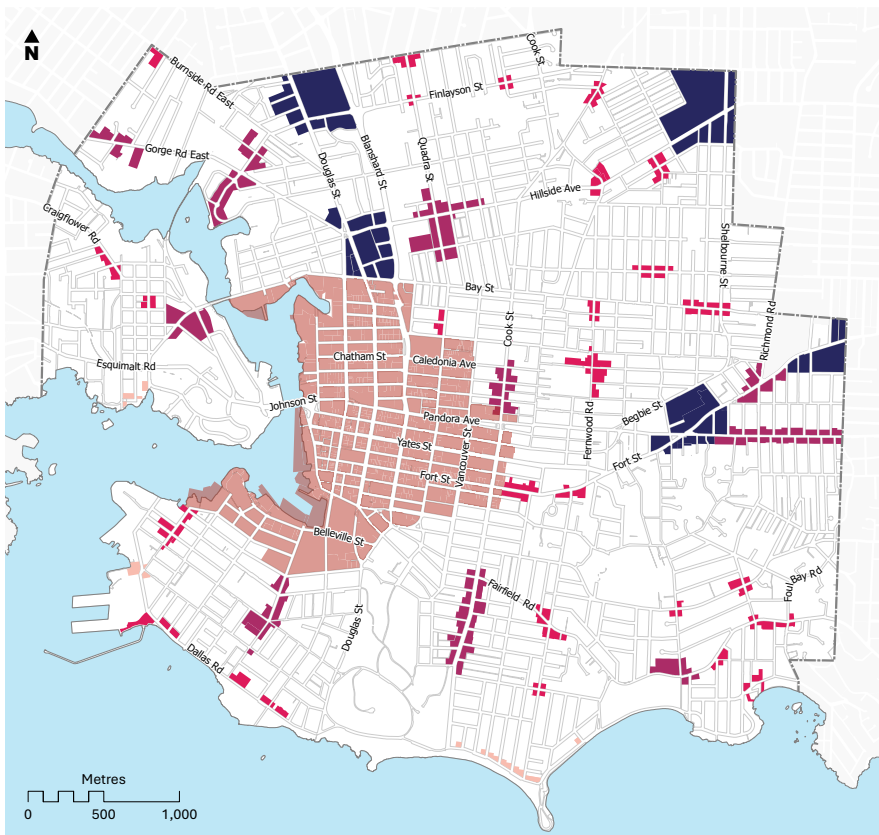
Villages and Town Centres are an important part of the character, vitality, livability and sustainability of Victoria.

The character and identity of Villages and Town Centres depend largely on several factors. These include the design, use and interface of buildings with streets. The diversity of shops and services along the street, local geography and associated natural features, such as plantings and street trees, also play an important role. In addition, the mobility function of streets that connect and center villages and town centres helps define their character.

The design of the public realm plays an important role in supporting the activity and identity of Villages and Town Centres. It creates a welcoming, safe, comfortable, and accessible environment. The design supports high volumes of pedestrian activity, social gathering and business activity such as patio-cafes and sidewalk displays.

New waterfront villages are a new opportunity for residents and visitors to enjoy our coastal city in all seasons and access services such as rentals, small retail cafes and restaurants.

Public Realm Standards Areas



Legend

- Downtown Core Area
- Town Centre
- Community Village
- Local Village
- Waterfront Village

This map shows the boundaries of the Downtown Core Area, and the extents of Town Centres, Community Villages, Local Villages and Waterfront Villages. These boundaries help indicate where specific public realm standards apply.

1.3 PURPOSE AND USE

These guidelines provide design guidance for public realm improvements that occur as a part of developer-initiated frontage improvements or through City capital projects. The guidelines comprise a kit of parts of materials, furnishing and landscape, along with design and layout guidelines, for public open spaces and streetscapes in designated Villages and Town Centres. The guidelines also include Village specific guidance where large-scale and positive, pre-existing motifs occur.

The guidelines apply to a diversity of unique conditions that occur within different Villages and Town Centres. Therefore, the guidelines are intended to be interpreted and used with discretion to meet the needs of each specific site and context as part of the detailed design and development approvals process.

These guidelines are intended to be used in tandem with other key

These guidelines will be updated from time-to-time based on ongoing monitoring and evaluation of guideline implementation.

City bylaws and documents, according to the Works and Services bylaw, and including, but not necessarily limited to, the range of relevant documents noted below.

Dimensions and allocation of space based on the unique cross-section for each frontage location is determined by the Works and Services Bylaw. Application of the Public realm Guidelines will require adaptation to the specific attributes, dimensions and other characteristics of each frontage location. (see section 3.1 page 7)

Construction details and specifications for all frontage included in this document are available in the Engineering Standards and Specifications (ESS) Manual.



URBAN FOREST MASTER PLAN



WORKS AND SERVICES BYLAW, AND SCHEDULE A: ENGINEERING STANDARDS and SPECIFICATIONS (ESS)



GO VICTORIA



WAYFINDING STRATEGY



CLIMATE LEADERSHIP PLAN



CITY OF VICTORIA ACCESSIBILITY FRAMEWORK



ART IN PUBLIC PLACES POLICY & GUIDELINES



PLACEMAKING TOOLKIT



CREATE VICTORIA



BANNER PROGRAM

A photograph of a sidewalk scene with a teal circular overlay containing text. The background shows a sidewalk with people walking, trees, and a building. A teal circle with a dotted border is centered over the image. Inside the circle, the text "PART 2 DESIGN PRINCIPLES AND STRATEGIES" is written in white, bold, sans-serif font. The text is arranged in four lines: "PART 2" on the first line, "DESIGN PRINCIPLES" on the second, "AND" on the third, and "STRATEGIES" on the fourth. The overall image has a blueish tint.

PART 2
DESIGN PRINCIPLES
AND
STRATEGIES

2 DESIGN PRINCIPLES AND STRATEGIES

2.1 DESIGN PRINCIPLES

The streetscape design standards are intended to support highly livable, welcoming and vibrant communities. This is achieved by designing streetscapes for comfort, functionality, accessibility, safety and visual interest - according to the following design principles:

Identity

Create a unified and cohesive streetscape character and set of materials and furnishing for the City's Villages and Town Centres, while also embracing the positive and established streetscape characteristics for unique areas.

Successful Businesses/Multi-Use Streets

Support successful local businesses and allow flexibility for a variety of uses such as retail display, outdoor seating, street vendors, and festivals.

Pedestrian and Transit-Friendly Destination

Prioritize comfort, safety and accessibility of pedestrians, cyclists and transit users while recognizing the need for parking and loading.

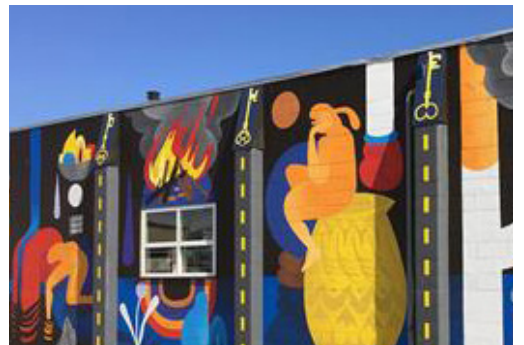
Durability and Sustainability

Prioritize use of durable, and high-quality materials with low embodied carbon.

Design for All

Consider the experiences of the whole community in creating inclusive, age-friendly, welcoming and accessible public spaces, including:

- Barrier-free design and universal accessibility.
- The needs of babies, children, and their caregivers as pedestrians, cyclists, and transit users in urban streets.
- Incorporation of playful elements within the public realm for all ages.
- Provision of adequate seating, clearances and sight lines and visual cues.



2.2 DESIGN STRATEGIES

Six key high-level design strategies have been developed to achieve the design principles.

1

Comfortable and Convenient Seating

In a variety of forms to support rest, socializing and places to eat and drink.



2

High Quality & Continuous Street Trees

Large, healthy trees are essential to creating great streets. Continuous, high-quality tree planting contributes immensely to the environmental benefit, beauty and comfort of our villages.

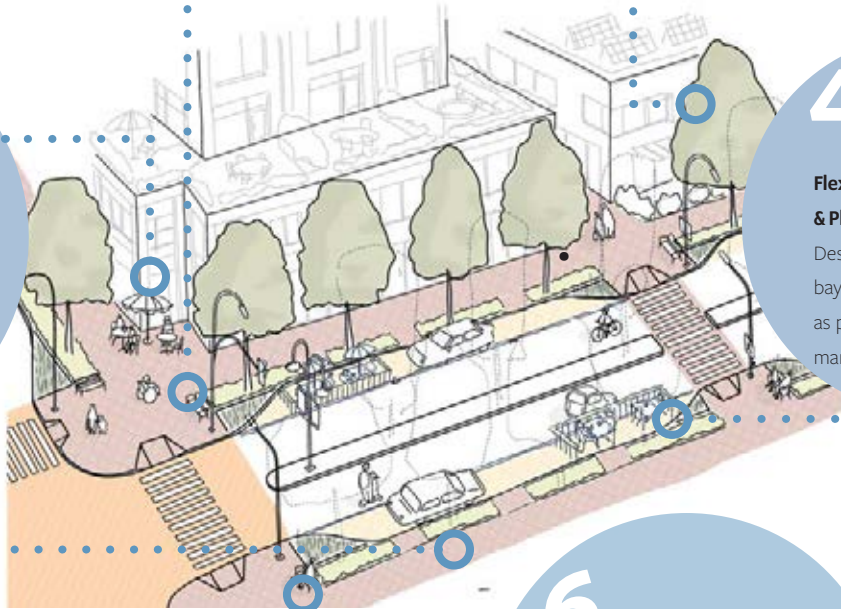


Cook Street Village

3

Urban Rooms

Embracing strategic locations within the streetscape as “outdoor rooms” framed by adjacent buildings and uses, and furnishing to support social activity, comfort and amenities within the streetscape.



4

Flex Space, Patios & Placemaking

Design sidewalks and parking bays to be flexible for use as patios, parklets and small markets/festivals.

5

Attractive and Durable Sidewalk Treatment

In order to create a sense of unity on sidewalks that are developed over time, a simplified materials palette for paved surfaces is specified.

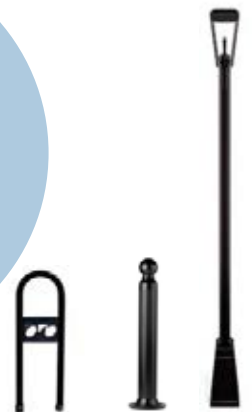


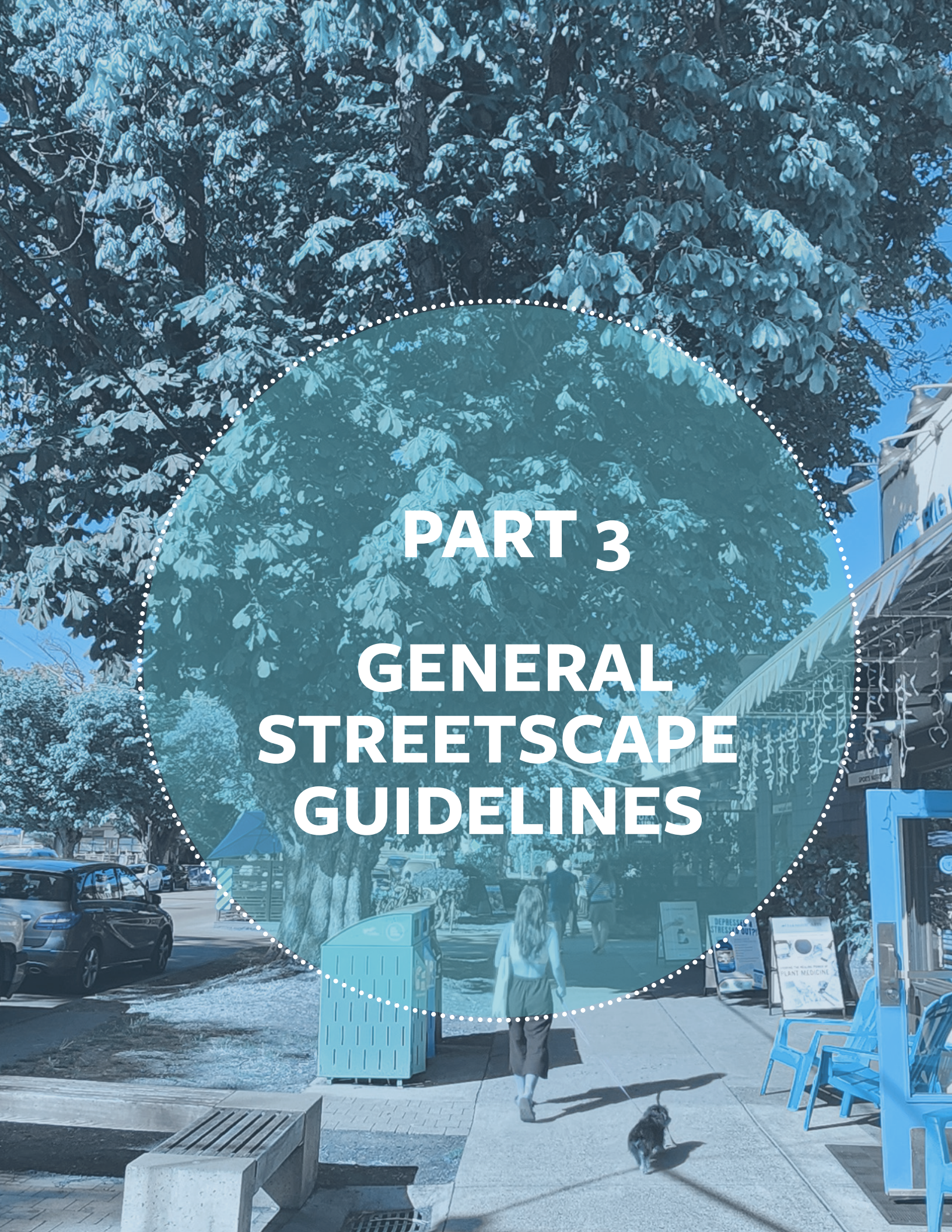
Oak Bay Village

6

Cohesive Streetscape Elements

Timeless, simple and durable street furnishing and materials to enhance comfort, safety and convenience.





PART 3

**GENERAL
STREETSCAPE
GUIDELINES**

3 GENERAL STREETSCAPE GUIDELINES

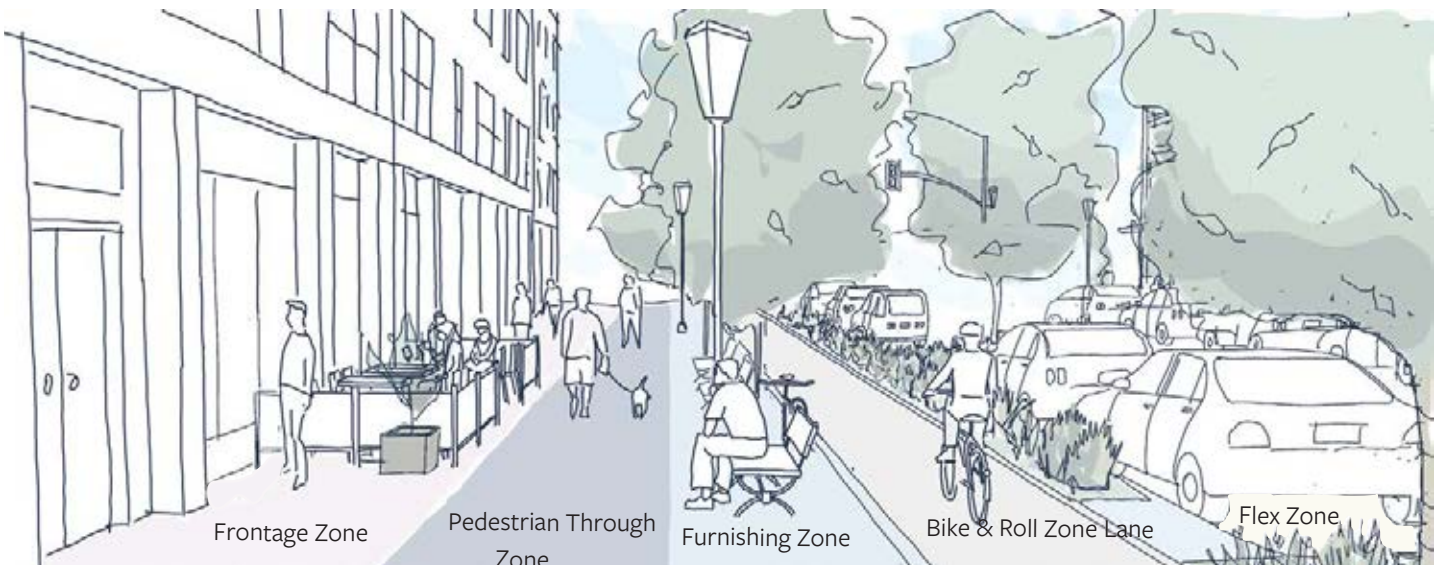
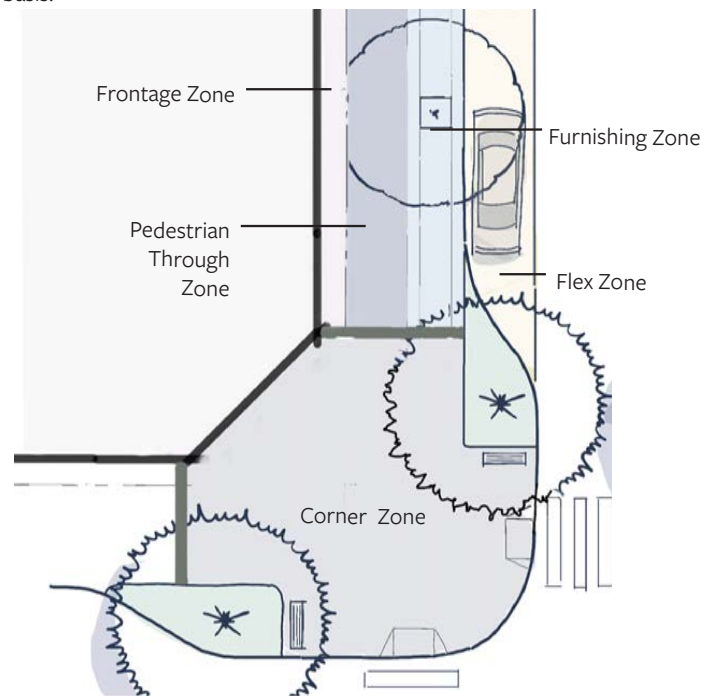
3.1 LAYOUT OVERVIEW

The pedestrian realm within Villages and Town Centres is premised on supporting high volumes of pedestrian activity including publicly-oriented uses at grade, multi-modal access to and through commercial areas, and urban street trees and storm water function. To this end, the pedestrian realm is structured on accommodating the streetscape zones described below. Spatial/width requirements for the sidewalk zones, and type and location of AAA bike infrastructure vary depending on location, street type and context as set out within the City of Victoria Works and Services Bylaw.

- **Frontage Zone:** The portion of the sidewalk that functions as an extension of the building, including recessed entryways and doors, patio-cafe seating, displays and sandwich boards.
- **Pedestrian Through Zone:** The primary, accessible pedestrian pathway that runs parallel to the street, providing a clear, comfortable and safe path of travel along the sidewalk including access to business and building entries along it.
- **Furnishing Zone:** The section of the sidewalk between the curb and the through zone in which street furniture and amenities, such as lighting, benches, newspaper kiosks, utility poles, tree pits, and bicycle parking are provided. The street furniture zone may also consist of green infrastructure elements, such as rain gardens or flow-through planters.
- **Bike and Roll Zone:** Where provided, provides multi-modal access to and through Villages and Town Centres, while also buffering pedestrians from adjacent parking or travel lanes, and providing additional soil volume areas using soil cells underneath the bike lane.
- **Parking/Flex Zone:** Provides space for on-street parking, commercial loading, and flexibility to accommodate sidewalk cafe seating, parklets, temporary displays and street markets, and additional tree planting areas. See Works and Services Bylaw and Standards Drawings for curb types, to inform detailed design.

- **Corner Zone:** provides sufficient space for pedestrians to wait at cross walks, potentially through curb bump-outs and/or building setbacks, and include seating, pedestrian lighting, and street name bands to frame these spaces as small 'outdoor rooms'.

The specific location and layout of street furniture, street trees, planters, paving materials and other streetscape elements will be dependent on the specific cross-section and streetscape zones within it (as set out in the Works and Services Bylaw) on a case-by-case basis.

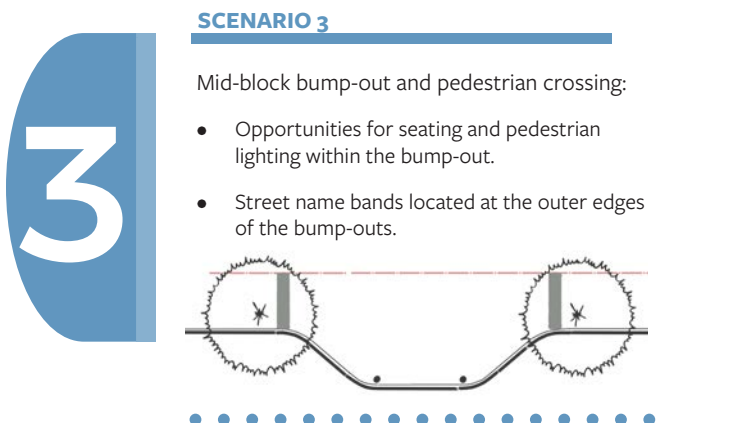
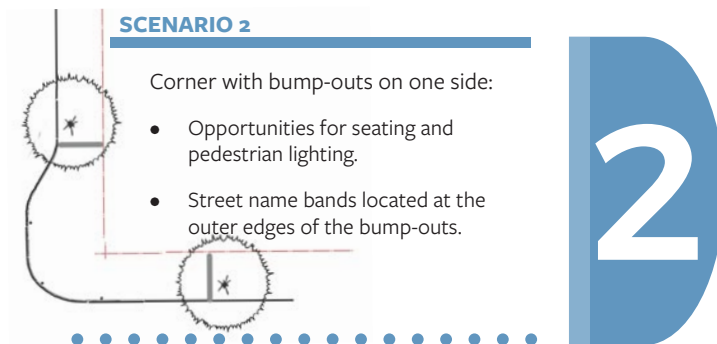
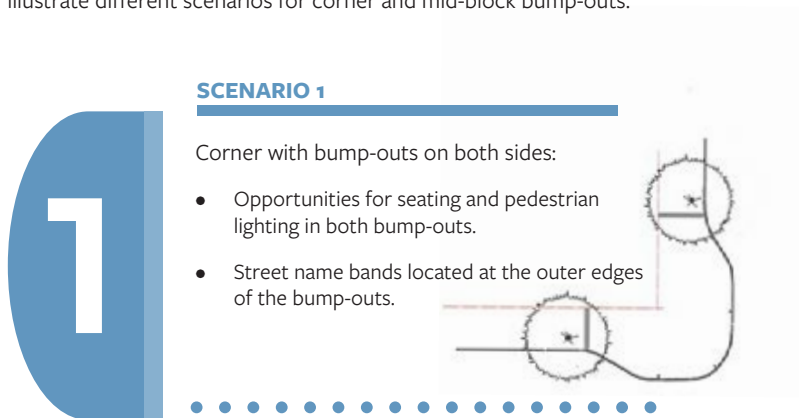


3.2 CORNER AND MID-BLOCK BUMP-OUTS

Corner and mid-block bump-outs should be provided where possible, to improve the comfort, safety and amenity of pedestrians, including:

- Increased room for waiting and circulation.
- Improved sense of pedestrian safety.
- Reduced length of crosswalks.
- Improved connectivity.

Different scenarios for corner bump-outs create different opportunities for integrating seating, pedestrian lighting and street trees, with street name bands located at the outer edges of the bump-outs. The below diagrams illustrate different scenarios for corner and mid-block bump-outs.

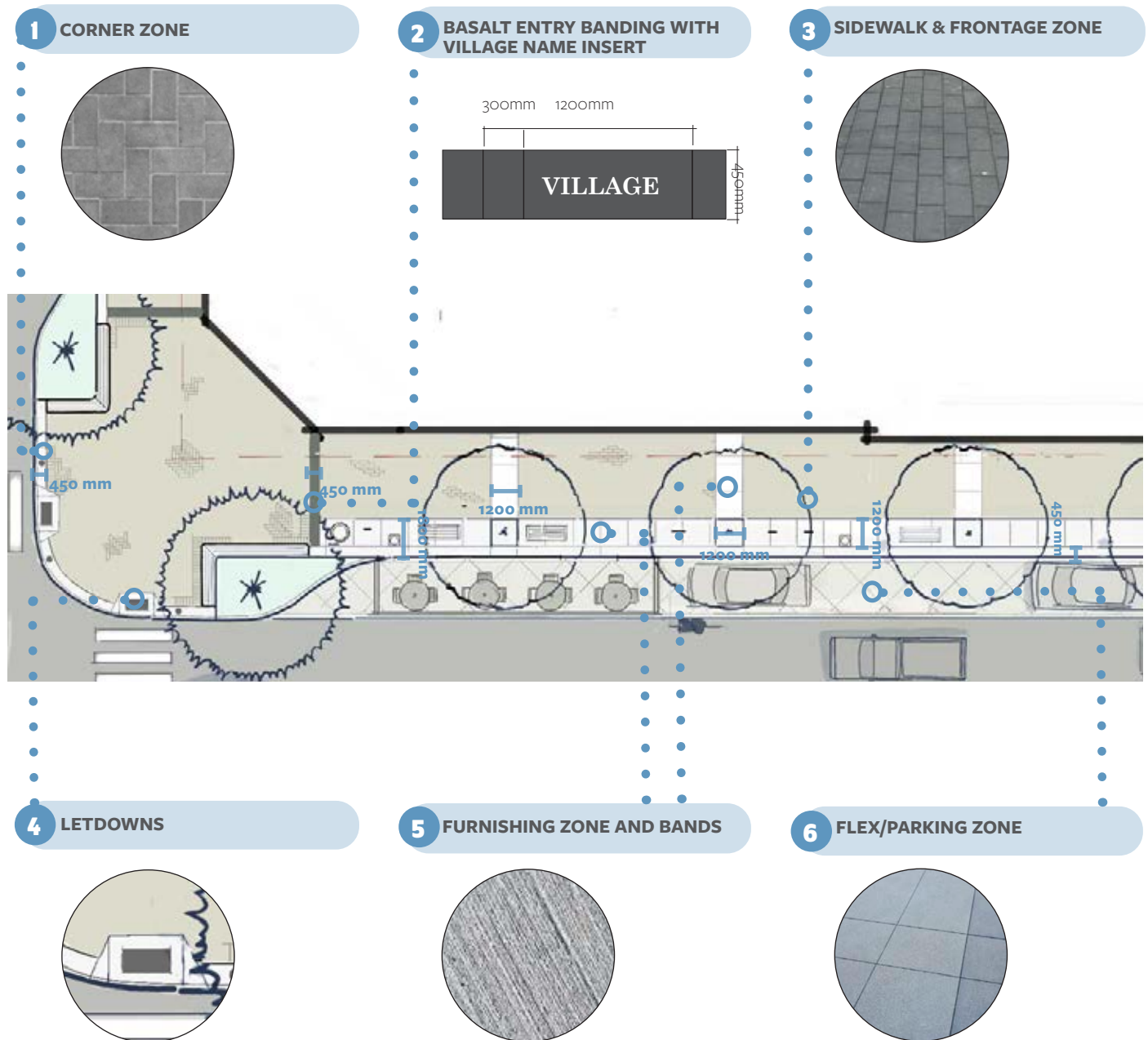


3.3 PAVING MATERIALS AND LAYOUT

The type, location and pattern of paving materials are intended to support accessibility, durability, and maintenance, while contributing to a high-quality and cohesive public realm.

Construction details and specifications for all frontage included in this document are available in the Engineering Standards and Specifications (ESS) Manual.

Different paving applications create subtle delineation between sidewalk zones, and support the location and installation of street furniture, bollards, lighting, street trees, and other infrastructure.



1 CORNER ZONE



- Paving type: Concrete unit paver 225mm x 112mm x 60mm.
- Paving pattern: Herringbone, with a soldier coarse surround.
- 450 mm CIP concrete banding at the edge of curb and planter.

2 BASALT ENTRY BANDING WITH VILLAGE NAME INSERT



- Pattern: 300mm x 450mm wide single-row soldier course band with 1200mm x 450mm slab where street name appears.
- Orient towards user approaching named street.

3 SIDEWALK & FRONTAGE ZONE



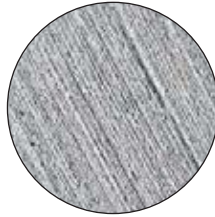
- **Sidewalk Zone**
- Paving type: Concrete unit paver 225mm x 112mm x 60mm.
- Paving pattern: Running bond.
- **Frontage Zone**
- 1200 mm CIP concrete band (broom finish) with panels perpendicular to the sidewalk, in line with the tree grates, or as discrete sections, extending up to a maximum of 10m.

4 LETDOWNS



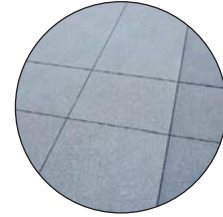
- CIP Concrete with cast-iron tactile mats.
- See Works and Services Bylaw and Standards Drawings.

5 FURNISHING ZONE



- CIP Concrete.
- Finish: Broom finish.
- Joints: Trowel or saw cut.
- Provide control joints across 450mm bands every third panel.

6 FLEX/PARKING ZONE



- Paving material: Varies - either concrete unit pavers; CIP concrete in a diamond saw-cut pattern; stamped asphalt.
- See Works and Services Bylaw and Standards Drawings for curb types to inform detailed design.

PAVER COLOUR FOR DIFFERENT APPLICATIONS

A differentiated paving color palette will be implemented to visually distinguish town centres, community villages, and local villages to enhance their individual character and sense of place.



Local Villages:
Harvest color

Community Villages:
Charcoal and Natural

Town Centres:
Shadow color

3.5 STREET TREES AND RAIN GARDENS

OVERVIEW

Street trees and rain gardens are key components of the City's Blue Green Network identified in the Victoria 2050 OCP, with the goal of maintaining the health and function of key natural assets throughout the City. Street trees and rain gardens contribute significantly to the overall character and comfort of the public realm and ecological health of the city. This includes helping frame and define streets and public spaces, creating shade and cooling effects on hot sunny days, and contributing to the urban forest which, in addition to significantly enhancing livability, provides urban habitat and helps absorb stormwater.

The guidelines in this section focus on location, spacing, and other general layout considerations for integrating street trees, raingardens and feature plantings into streetscapes and public spaces within Victoria's Villages and Town centres. They are intended to be used in tandem with the City's Urban Forest Master Plan and other relevant City bylaws which provide more technical information and guidance including planting details, soil volumes, species selection, and construction specifications.

Suitability for incorporation of rain gardens and other green stormwater infrastructure approaches will be determined on a case-by-case basis in coordination with the City of Victoria Stormwater Management team. Tree and plant selection will be specified during the development approvals process, in coordination with the City of Victoria Urban Forestry team.

Please see Works and Services Bylaw and Schedule A: Engineering Standards and Specifications (ESS) for details.



Rain garden integrated with streetscape furnishing



Continuous street tree planting



Rain garden absorbing stormwater

LANDSCAPE FENCING

Low height, ornamental landscape fencing to be used in some boulevard and rain garden applications as approved by the Director of Engineering.

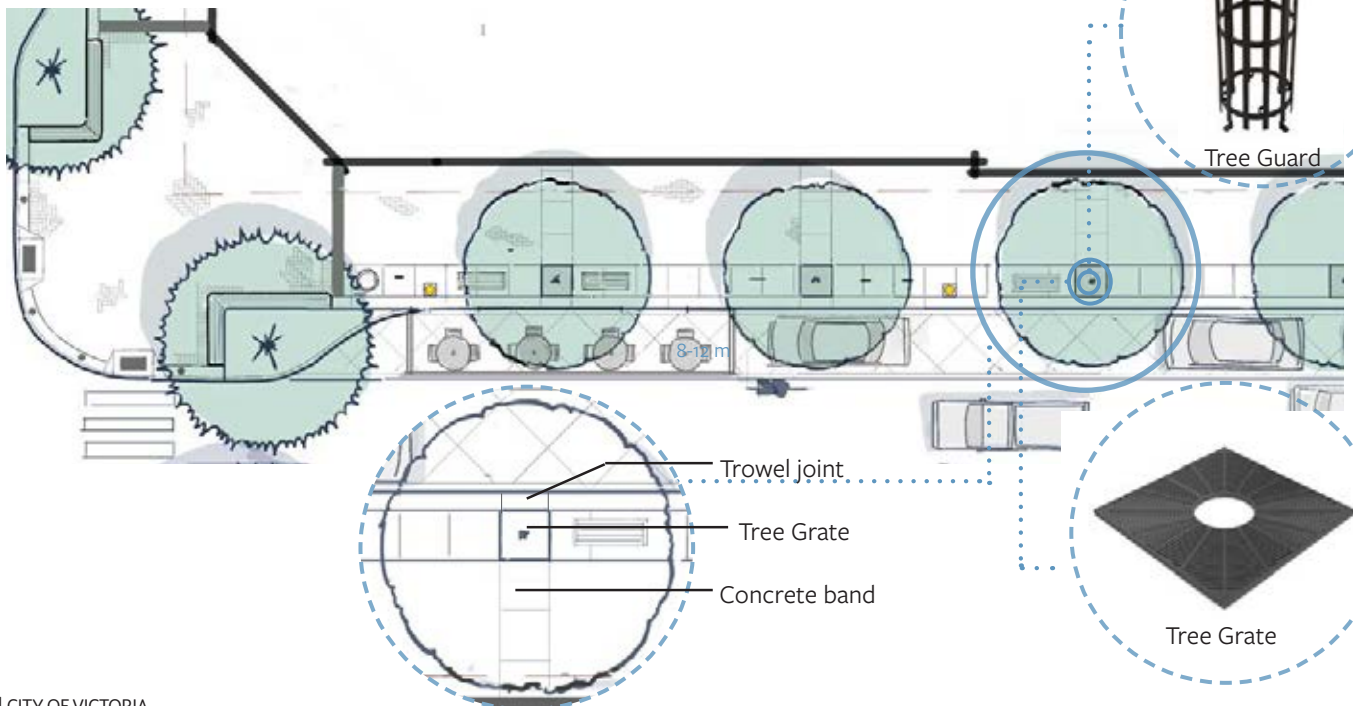
Landscape Fencing Should:

- Be recessed from the street a minimum of 300 mm.
- Be no shorter than 300 mm, or no taller than 450 mm.
- Be made of metal, and painted (vs powder-coated) black.
- Allow water to freely enter the tree bed.
- Not have any sharp points.
- Not be anchored into the sidewalk.
- Not be fastened with concrete in the tree bed.



STREET TREE PLACEMENT

Generally, street trees should be located at a spacing of between 8 and 12 metres, depending on the tree species, with tree grates setback 450 mm from the curb edge (adjacent to the 450 mm concrete band located at the curb edge). Street trees should generally be centred when planted within a boulevard. Location of sufficient soil volumes, and above and below-ground infrastructure are additional considerations for locating street trees.



Trowel joint patterns surrounding tree grates within the furnishing zone should match the 1.2m dimension of the tree grate. Tree grates should generally be located against a 450 mm band adjacent to the curb edge.

Where trees are located within a grassed or planted boulevard adjacent to a street parking/flex zone, a paved access path of 800mm width minimum should be provided in between tree plantings, and located to minimize conflicts with root zones.

Adaptation of existing tree locations to sidewalk improvements:

- Small modifications of proposed trowel joint pattern are recommended to best accommodate for existing tree locations. Detailed design by applicant based on recommendations to be provided by staff on a case-by-case basis for each improvement area.
- Where existing overgrown tree roots and large tree trunks prevent the use of tree grates, poured-in-place resin-bound material should be used instead of tree grates.

New development condition:

- Use soil cells where trees are planted in hardscape.
- Use soil cells and root barriers where root balls are located close to underground infrastructure.
- Site street trees and associated tree grates and banding, in consideration of adjacent architectural features, where possible.

Please see Works and Services Bylaw and Schedule A: Engineering Standards and Specifications (ESS) for details.

3.6 FURNISHINGS AND PEDESTRIAN LIGHTING

OVERVIEW

High-quality and thoughtfully integrated pedestrian lighting and street furniture support comfort, safety, accessibility and social gathering, and overall, contribute to a welcoming and inviting streetscape environment and sense of place.

Pedestrian lighting and street furniture including benches, seat walls, waste-bins, and bike racks should generally be located within the furnishing zone where the CIP concrete surface facilitates mounting and flexibility in location. The specific quantity, siting, orientation and spacing of pedestrian lighting and street furniture will be determined on a project-specific basis based on the location, type, and frequency of street trees, street-light and signal poles, required signage and other surface infrastructure. Where proposed, custom or alternatives to the street furniture noted on Page 13 will be at the discretion of the Director of Engineering.

PEDESTRIAN LIGHTING

Generally, the Modern Heritage light (shown on Page 13) is the preferred pedestrian light for Villages and Town Centres. Where there is already an established pedestrian light type and character, that style should be used.

Pedestrian lighting should generally be located:

- At a general spacing distance of 15-20m (depending on street tree spacing and frequency).
- Adjacent to the 450 mm concrete band adjacent to the curb.
- Providing a minimum 600 mm clearance between the edge of the pedestrian light base and the curb edge.
- A minimum 3m distance from street trees.



STREET FURNITURE

Street furniture including benches, bins, and bike racks should generally be according to the product specifications, and located centred on the tree grates within the furnishing zone.

Benches can be either backed or backless, depending on the location and orientation, with a preference for backed benches wherever possible.

Where seat walls are integrated as part of the frontage, they should be used and designed to enclose a planter or rain garden, and incorporate a wood or equivalent seat top. The width, length and overall design of seat walls are to be determined on a site-by-site basis, depending on the context and overall frontage design.

Bike racks should be located and oriented to maintain adequate pedestrian flows along the sidewalk (a minimum 2.2m pedestrian through zone) and connectivity between the sidewalk and flex zone.

Construction details and specifications for all frontage included in this document are available in the Engineering Standards and Specifications (ESS) Manual.



PEDESTRIAN LIGHT



MHP - Modern Heritage Pedestrian Light- Ashbery style fixture on a "B" cluster pole (V1 or V2 base).



SHP - Simple Heritage Pedestrian Light - Ashbery style fixture and skirt on a 4" round pole (B base).

BENCH AND CHAIR



B1: Modern style with back

- Materials: Black metal frame with IPE wood.
- Application: All areas including plazas and feature locations and corner bump-outs.



B2: Modern style without back

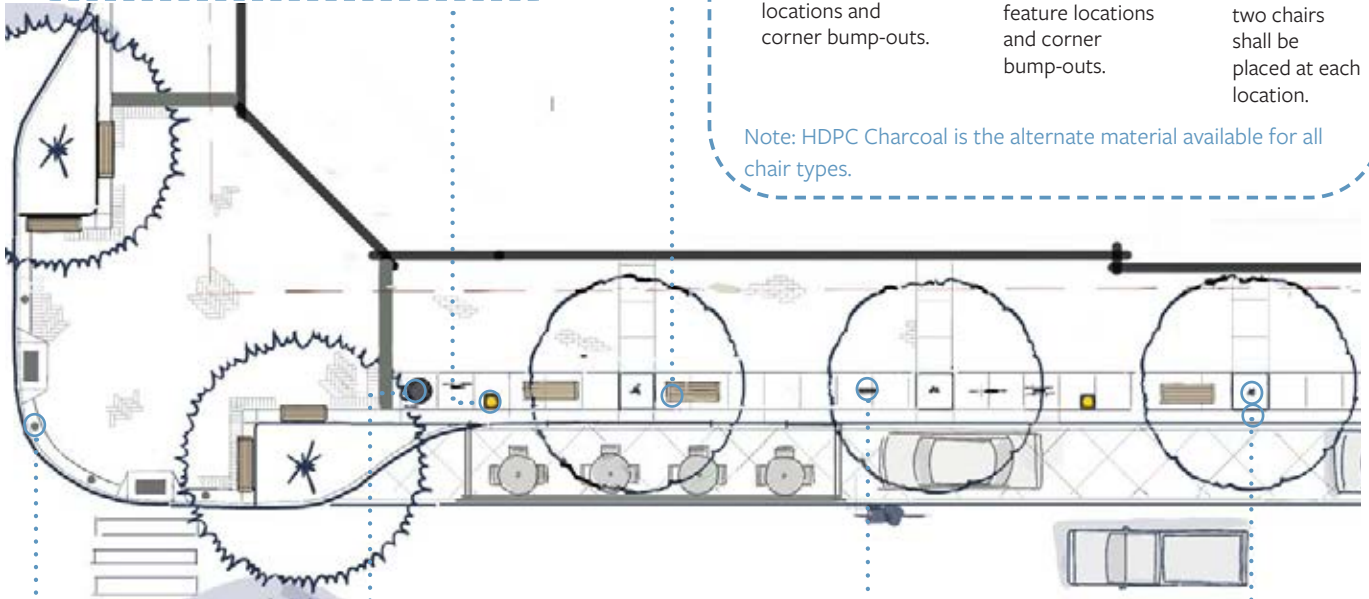
- Materials: Black metal frame with IPE wood
- Application: All areas including plazas and feature locations and corner bump-outs.



Modern style chair

- Materials: Black metal frame with IPE wood.
- Note: Minimum of two chairs shall be placed at each location.

Note: HDPC Charcoal is the alternate material available for all chair types.



BOLLARDS



Bollard: Modern style

- Application: Corner bump-outs and all other locations where vertical separation is needed.
- Bollards should be installed on flat surfaces only.

TRASH BINS



Type B: Outdoor Waste Enclosure

- Application: All streets, corner bump-outs and plazas.

BIKE RACK



Bike Rack

- Application: All Villages unless otherwise noted.

TREE GUARD



Tree Guard

- Application: All Villages

TREE GRATE



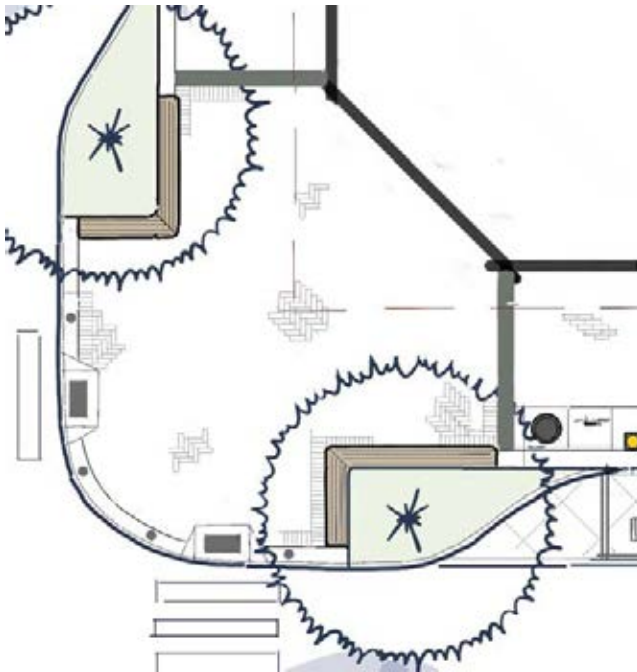
Tree Grate

- Application: All Villages.

ALTERNATE SEATING OPTIONS FOR CORNERS

Seat walls and chairs are alternative seating options that can be considered for corners and mid-block locations. Seat walls can be used to enclose a planter or rain garden while framing the corner pedestrian zone.

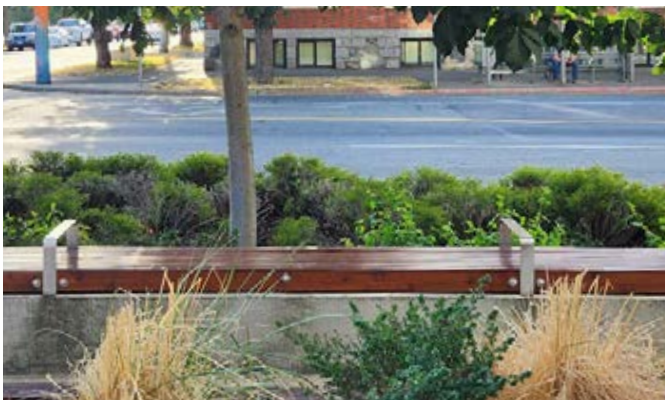
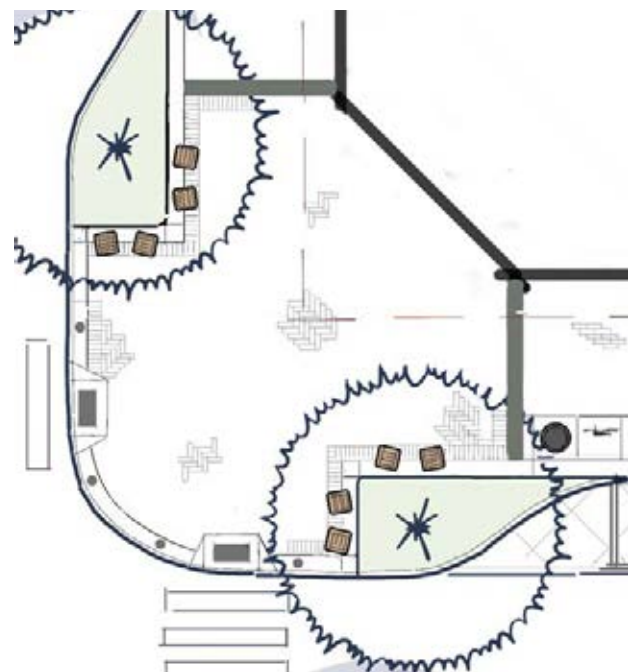
SEATWALL




Chairs can be oriented to create more social and intimate seating.

Construction details and specifications for all frontage included in this document are available in Engineering Standards and Specifications (ESS) Manual.

CHAIRS MOUNTED IN PAVING FIELD



A photograph of a city street scene, likely in winter, with a teal circular overlay. The overlay contains the text "PART 4" and "VILLAGE-SPECIFIC GUIDELINES". The background shows a sidewalk, a building with a large window, a person walking, and a car parked on the street. The text is in a bold, white, sans-serif font.

PART 4
**VILLAGE-SPECIFIC
GUIDELINES**

4 VILLAGE-SPECIFIC GUIDELINES

4.1 OVERVIEW

All of the City’s villages are special in their own way, though some have established defining public realm elements that will need different considerations that can be addressed through the standards section of this document.

At the same time, villages have unique and, in some cases, constrained sidewalk widths, and therefore require a design response that speaks to the unique context.

Further, new waterfront villages have the opportunity for furnishing and material treatments based on their unique interface with the waterfront.

The following pages provide additional guidance for short and long-term treatment in the context of the unique contexts noted above.



4.2 QUADRA VILLAGE

Quadra Village is the heart of the Hillside Quadra neighbourhood and has a unique mix of local and regional serving shops and services, with a mix of housing above some of the shops and services. Quadra and Hillside are both significant transit routes and there are several major bus stops in the village area. A streetscape beautification project in the 1990’s resulted in a unique and pedestrian-oriented streetscape design, with a paving pattern, colour palette, gateway signage, lighting and street furniture unique to Quadra Village, resulting in a sense of place and special character for the street.

CURRENT PUBLIC REALM:

- Gateway signs and banners marking entrances to the Village.
- Tinted concrete in a swirl pattern.
- Maroon colour palette for street furniture and lighting.
- A planted centre median with street trees.



FUTURE PUBLIC REALM IMPROVEMENTS:

- For repairs and individual frontage improvements, the existing paving and furnishing palette should be retained.
- When a larger development or capital improvement is planned to span an entire block face or more, the materials, furnishing and layout identified in Section 3 should be used, while maintaining the maroon colour palette.



4.3 COOK STREET VILLAGE

Cook Street Village is a beloved destination for Fairfield residents and many others across Victoria and the region, due to its unique collection of shops, cafes, services and proximity to parks and waterfront. The cherished character and identity of Cook Street Village is defined principally by the mature horse chestnut trees with their large canopies and the generous boulevard they are planted within; the diverse mix of pedestrian-oriented shops, restaurants and cafes that line and spill out onto the sidewalk and boulevard, and the vibrant street life that results.

CURRENT PUBLIC REALM:

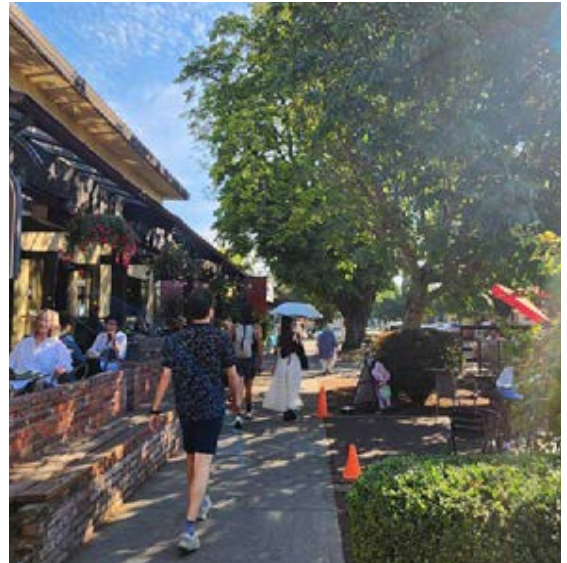
- Sidewalks are relatively wide with a mix of simple broom-finished concrete and more elaborate unit paver zones with some corners highlighted with a warm floral brick motif.
- Active patios line the central commercial areas on both the sidewalks and flex zones.
- Mature horse chestnut trees in grassed boulevards.
- There is no particular lighting or furnishing theme or standard.

FUTURE PUBLIC REALM IMPROVEMENTS:

- For repairs and individual frontage improvements the existing paving and furnishing palette should be retained.
- When a larger development or capital improvement is planned to span an entire block face or more, the new general standards should apply.

BOULEVARD IMPROVEMENTS:

- The existing trees should be maintained and protected wherever possible. Current conditions have resulted in trampling, compacted soils and damaged roots in some areas, and limited overall accessibility.
- Incorporation of seating, hard surfaces, plantings and other landscape features and pedestrian amenities within the boulevard zone are supported, while avoiding disturbance of root zones of mature chestnut trees (illustrated conceptually in image to the right).
- Consider plantings and rain gardens located and designed to protect the trunks and root zones of boulevard trees.
- Seating areas within the boulevard zone can be considered as outdoor rooms framed between the boulevard trees and including public patio seating.



4.4 FERNWOOD VILLAGE

Fernwood Village is made up of a cluster of heritage buildings that house a mix of retail, restaurants, and pubs, along with arts and culture uses, framing the Village streets and adjacent Gladstone Square. Fernwood Village has significant pedestrian activity and a number of patio cafes spilling onto the Village open spaces. The Village also hosts Fernfest, a three-day long street party in the heart of the Village.

The streets and sidewalks in the Village are very narrow, making a conventional sidewalk and furnishing zone not possible. To accommodate significant pedestrian volumes and patio cafe activity here, a slow, shared street approach, including a raised intersection, and consideration of grade-raised streets within the Village core is desired. High-quality paving materials, and strategic and customized seating and plantings will enhance the unique sense of place while supporting pedestrian activity, businesses, and arts and cultural uses that the Village is celebrated for.



4.5 WATERFRONT VILLAGES

The Victoria 2050 OCP identifies six Waterfront Villages, intended to provide small-scale, local and regional uses and services. Unique design approaches, alongside the general design guidance in Section 3, should be considered in response to their waterfront location. These include, but are not limited to:

- Select furnishing, materials and planting suitable for environmental salinity, and increased wind.
- Wood timber seating with stainless or galvanized steel.
- Lounge and Adirondack style seating located and oriented towards the view are encouraged.
- Consider specific users and needs such as: Increased active recreation use, children and dogs, rental equipment.
- Contemporary finishes with coastal reference are appropriate.
- Pavers are the preferred surface materials, with a preference for natural stone.



4.6 A NOTE ON NARROW SIDEWALKS

Where sidewalks are not able to have sufficient width to accommodate all the Streetscape Zones as described in Section 3.1, the pedestrian through zone shall take precedent, with consideration of the following:

- Where the total sidewalk width is 3 metres or less, a continuous field of pavers from building face to sidewalk edge is the preferred approach.
- The flex zone should be prioritized for street trees and patios.
- Consider building setbacks at grade to create additional sidewalk space, where possible.



4.7 PLACEMAKING

Unique shops, buildings, natural features and mobility found in each village, together with use of high-quality materials, furnishing and healthy mature street trees, combine to create a unique identity for each Village and Town Centre.


In addition, a range of placemaking strategies and opportunities unique to each Village or Town centre can further enhance a sense of place and identity. These include:

- Opportunities for new patios and seating areas within sidewalks and flex zones.
- Public art including murals.
- Street parks and plazas within the Village or on adjacent streets.
- Unique, creative pedestrian-oriented business signage.
- Village branding through banners or gateway signage and engraved stone banding with Village name.
- Interpretive elements in the public realm to tell local stories - such as historical photo wraps on utility kiosks.
- Enhanced crosswalks with special paving or murals, planting accents or other elements.
- Feature seating and furnishings including playable furniture on a case-by-case basis.
- Wayfinding signage.

PUBLIC ART CONSIDERATIONS

- The site's environment, including compatibility of adjacent features, accessibility, and visibility, as well as security risks - such as vandalism potential.
- Suitability of the work for outdoor display, including its maintenance and conservation requirements.
- Relationship of the work to the site and the host community, especially how it serves to activate or enhance public space.
- Appropriateness of the scale of the artwork.
- Aim to enhance the overall public environment and pedestrian streetscape experience.
- Help to create a place of congregation and activity.
- Establish landmarks and neighbourhood gateways.





PART 5
**STREETSCAPE
ELEMENTS
CATALOGUE**

ALL ITEMS BELOW ARE TO BE SOURCED THROUGH CITY OF VICTORIA STORES.

FURNISHING SHOULD BE ORDERED 24 WEEKS IN ADVANCE TO ENSURE QUANTITIES ARE AVAILABLE AND ADEQUATE LEAD TIMES ARE MET.

PLEASE CONTACT: ENGINEERING EMAIL INQUIRY <ENG@VICTORIA.CA> TO ORDER.

ALL OTHER FURNISHING IS TO BE SOURCED EXTERNALLY.



BINS



TREE GUARDS



BIKE RACKS



50W
LED

PEDESTRIAN LIGHTS

For all light poles: City of Victoria to supply pole only, applicant responsible to supply and install fixture.

***For non-City supplied furnishing, equivalent products may also be used, subject to approval by the Director of Engineering.**

MODERN HERITAGE SINGLE LIGHT

- PRODUCT TYPE:** Pedestrian Light.
- PRODUCT NAME:** "B Cluster" Pole with Ashbery Fixture*.
- DESIGN STYLE:** Modern Heritage.
- COLOUR/ FINISH:** Glossy Black (RAL 9017) Enamel.
- DIMENSIONS:** 14' Height.
- LIGHT SOURCE:** LED.
- DISTRIBUTION:** All Villages and Town Centres unless otherwise noted.

- MANUFACTURER:** Pole: City of Victoria, Fixture - Landscape Forms.
- SPECIAL NOTES:** Detailed design to be provided by the City of Victoria.



SIMPLE HERITAGE SINGLE LIGHT

- PRODUCT TYPE:** Pedestrian Light.
- PRODUCT NAME:** Ashbery style fixture* and skirt on a 4" round pole (B base).
- DESIGN STYLE:** Simple Heritage.
- COLOUR/ FINISH:** Glossy Black (RAL 9005) Powder coated.
- DIMENSIONS:** 14' Height.
- LIGHT SOURCE:** LED.
- DISTRIBUTION:** All Villages and Town Centres unless otherwise noted.

- MANUFACTURER:** City of Victoria supplies and installs pole, and applicant responsible for fixture.
- SPECIAL NOTES:** Detailed design to be provided by the City of Victoria.



MODERN WOOD BENCH

- PRODUCT TYPE:** Bench with Backrest.
- PRODUCT NAME:** Maglin 870 Backed Benches*.
- DESIGN STYLE:** Modern.
- MATERIALS:** Steel Frame and IPE or equivalent.
- COLOUR/ FINISH:** Powder coated Frame.
- DIMENSIONS:** 5'-11.25" Length, 2'-7.19" Height.
- DISTRIBUTION:** All Villages and Town Centres unless otherwise noted.
- MOUNTING:** Stainless-steel fasteners, tamper-proof bolts with nylon washer to protect paint finish.

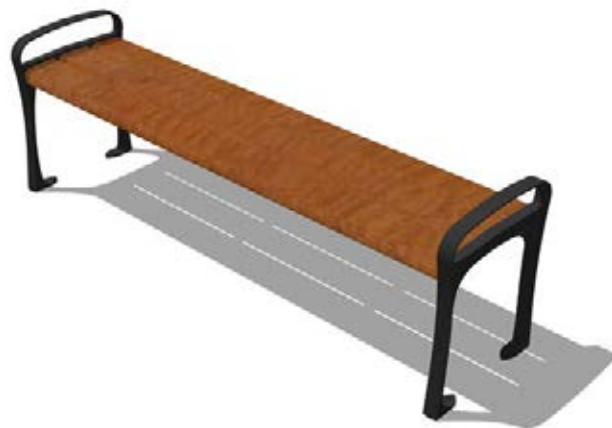
MANUFACTURER: Maglin Site Furniture.



MODERN WOOD BENCH

- PRODUCT TYPE:** Bench Backless.
- PRODUCT NAME:** Maglin 870 Backless Benches*.
- DESIGN STYLE:** Modern.
- MATERIALS:** Steel Frame and IPE or equivalent.
- COLOUR/ FINISH:** Powder coated Frame.
- DIMENSIONS:** 5'-11.25" Length, 2'-7.19" Height.
- DISTRIBUTION:** All Villages and Town Centres unless otherwise noted.
- MOUNTING:** Stainless-steel fasteners, tamper proof bolts with nylon washer to protect paint finish.

MANUFACTURER: Maglin Site Furniture.



MODERN WOOD BENCH

- PRODUCT TYPE:** Backless Wall Mount Bench.
- PRODUCT NAME:** Maglin MBE-0870-00046*.
- DESIGN STYLE:** Modern.
- MATERIALS:** Solid cast aluminum. and IPE or equivalent.
- COLOUR/FINISH:** Powder coated Frame.
- DIMENSIONS:** 69.5" Length, 3.81" Height, 16.56" Width.
- DISTRIBUTION:** All Villages and Town Centres unless otherwise noted.
- MOUNTING:** The bench is delivered pre-assembled. Holes (0.5") are provided in each bracket for securing to wall.
- MANUFACTURER:** Maglin Site Furniture.



MODERN WOOD CHAIR

- PRODUCT TYPE:** Wood Chair with Backrest.
- PRODUCT NAME:** Maglin 870 Chairs*.
- DESIGN STYLE:** Modern.
- MATERIALS:** Steel Frame and IPE or equivalent.
- COLOUR/FINISH:** Powder Coat Frame.
- DIMENSIONS:** 2' Length, 18" Height.
- DISTRIBUTION:** All Villages and Town Centres unless otherwise noted.
- MOUNTING:** Stainless-steel fasteners, tamper proof bolts with nylon washer to protect paint finish.
- MANUFACTURER:** Maglin Site Furniture.



RELIANCE FOUNDRY BOLLARD

PRODUCT TYPE:	Type B Bollard.
PRODUCT NAME:	Reliance Foundry Bollard R-7530*.
DESIGN STYLE:	Standard.
MATERIALS:	Ductile Iron.
COLOUR/FINISH:	Glossy Black (RAL 9017) Powder Coated.
DIMENSIONS:	35" Height.
DISTRIBUTION:	All Villages and Town Centres unless otherwise noted.
MANUFACTURER:	Reliance Foundry.
MOUNTING:	Surface mounted, Bolted to Concrete.



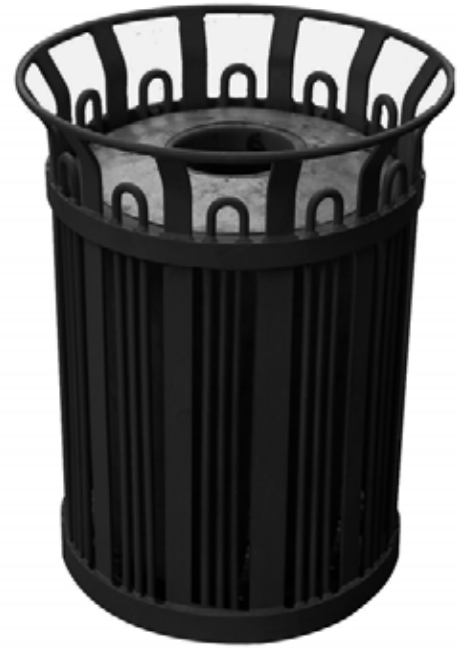
STANDARD BIKE RACK

PRODUCT TYPE:	2 Capacity Bike Rack.
PRODUCT NAME:	Standard Bike Rack.
DESIGN STYLE:	Standard.
MATERIALS:	1.5" Galvanized Steel Pipe.
COLOUR/FINISH:	Glossy Black (RAL 9017 or 9005) Baked-on, Powder Coated.
DIMENSIONS:	12" Length, 3' Height.
DISTRIBUTION:	All Villages and Town Centres unless otherwise noted.
MOUNTING:	Surface mounted.
MANUFACTURER:	City of Victoria.



OUTDOOR WASTE ENCLOSURE

PRODUCT TYPE:	Type B Outdoor Waste Enclosure.
MATERIALS:	Metal Frame.
COLOUR/FINISH:	Glossy Black (RAL 9005) Powder coated.
DIMENSIONS:	42" Height.
DISTRIBUTION:	All Villages and Town Centres unless otherwise noted.
MANUFACTURER:	City of Victoria.



ROUND TREE GRATE

PRODUCT TYPE:	Tree Grate.
PRODUCT NAME:	Round Tree Grate*.
DESIGN STYLE:	Contemporary No. RP-48.
MATERIALS:	Metal.
COLOUR/FINISH:	Natural Steel.
DIMENSIONS:	Min. 48" D.
DISTRIBUTION:	Special areas where use of square tree grate is not possible.
MANUFACTURER:	Dobney Foundry Ltd. (No. RP-48).



SQUARE TREE GRATE

PRODUCT TYPE:	Tree Grate.
PRODUCT NAME:	Square Tree Grate*.
DESIGN STYLE:	Contemporary.
MATERIALS:	Metal.
COLOUR/FINISH:	Natural Steel.
DIMENSIONS:	48" W.
DISTRIBUTION:	All Villages and Town Centres unless otherwise noted.
MANUFACTURER:	Dobney Foundry Ltd. (No. SP-48).



METAL TREE GUARD

PRODUCT TYPE:	Tree Guard.
PRODUCT NAME:	Metal Tree Guard.
DESIGN STYLE:	Contemporary.
MATERIALS:	Metal.
COLOUR/FINISH:	Glossy Black (RAL 9017 or 9005) Baked-on, Powder coated.
DISTRIBUTION:	All Villages and Town Centres unless otherwise noted.
MANUFACTURER:	City of Victoria.



LANDSCAPE FENCING

PRODUCT TYPE: Low height ornamental landscape fencing.

PRODUCT NAME: Curb Allure Tree Guard Fencing Frame and Panels*.

DESIGN STYLE: Contemporary.

MATERIALS: Metal.

COLOUR/FINISH: Painted black.

DIMENSIONS: 300 mm - 450 mm Height.

DISTRIBUTION: All Villages and Town Centres unless otherwise noted.

MANUFACTURER: Curb Allure.



Panel design options:



The Flower



Straight Pickets



Vine



Square in Square



Circle and Pickets



Diamond



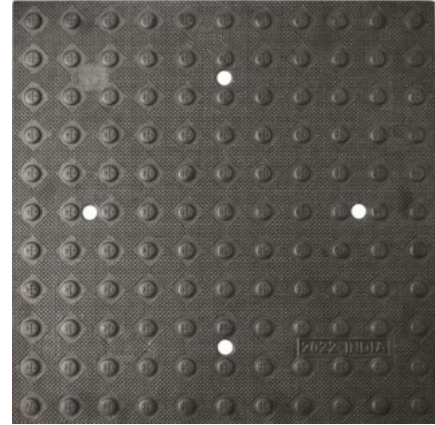
Floating Leaves



Flowers and Pickets

EMBEDDED TACTILE MAT

PRODUCT TYPE: Tactile mats.
PRODUCT NAME: Detectable Warning Plate R-4985-25R*.
DESIGN STYLE: Non-slip.
MATERIALS: Cast Iron ASTM A 48 Class 35B.
COLOUR/FINISH: Gray cast iron.
DIMENSIONS: H- 1.47", L- 24.2", W- 20.6".
DISTRIBUTION: All Villages and Town Centres unless otherwise noted.
MANUFACTURER: Reliance Foundry Co. Ltd.
<https://www.reliance-foundry.com/>
SPECIAL NOTES: Installation: Set in place, Weight- 48 pounds (21.77 kg), Design- Radial Plate.



SURFACE APPLIED TACTILE MAT

PRODUCT TYPE: Tactile mats.
PRODUCT NAME: Armour Tile Tactile System*.
DESIGN STYLE: Non-slip.
MATERIALS: Polymer.
COLOUR/FINISH: Yellow.
DIMENSIONS: 24" x 24".
DISTRIBUTION: Application limited to existing ones only.
MANUFACTURER: Armor tile or equivalent.
<https://armor-tile.com/>
SPECIAL NOTES: Surface mounted, cast-in-place pavers, adaptable options available depending on application.



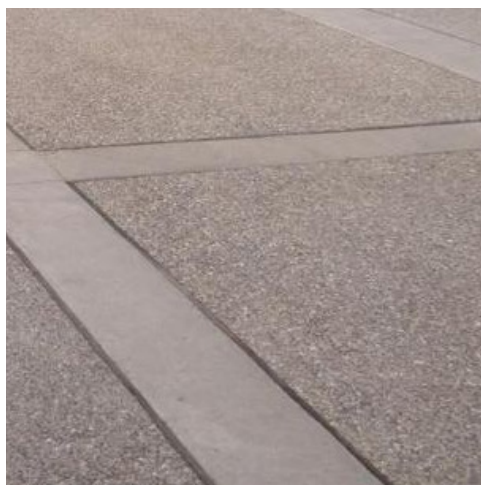
CONCRETE BROOM FINISH

PRODUCT TYPE:	Concrete Paving.
PRODUCT NAME:	Concrete Broom Finish.
INSTALLATION METHOD:	Cast-in-place.
COLOUR/FINISH:	Natural Broom Finish.
DIMENSIONS:	450mm Wide.
APPLICATION:	Sidewalk Frame.



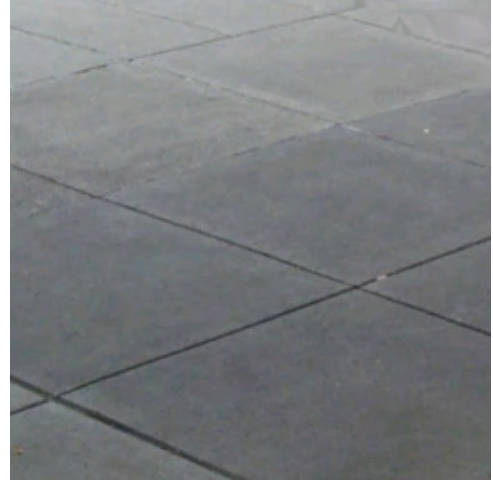
CONCRETE BAND

PRODUCT TYPE:	Concrete Banding.
PRODUCT NAME:	Concrete Band.
INSTALLATION METHOD:	Cast-in-place.
COLOUR/FINISH:	Natural.
DIMENSIONS:	450mm Wide.
APPLICATION:	Sidewalk Patterning.
SPACING:	3m min. or to match Architectural Elements when possible.



TROWEL JOINT CONCRETE

- PRODUCT TYPE:** Concrete Paving.
PRODUCT NAME: Trowel Joint Concrete.
INSTALLATION METHOD: Cast-in-place.
INSTALLATION NOTE: Prior to broom-finish application, trowel out shoulder to leave only a score line.
COLOUR/FINISH: Fine Broom Brush.
DIMENSIONS: Plan Specific.
APPLICATION: Sidewalk Fill.



CONCRETE UNIT PAVER

- PRODUCT TYPE:** Concrete Paving.
PRODUCT NAME: Concrete Unit Paver*.
INSTALLATION METHOD: Sand set over concrete slab.
COLOUR/FINISH: Natural Grey Unsealed or Charcoal Grey
DIMENSIONS: 225mm Width x 112.5 mm Depth x 60mm Thick.
APPLICATION: Paving Field.
MANUFACTURER: Abbotsford Concrete Products Ltd. or equivalent.



natural grey

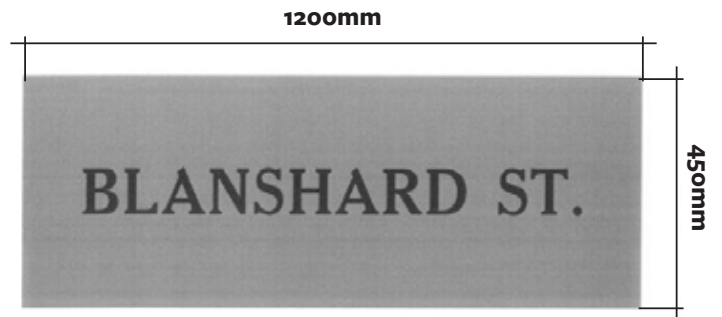
charcoal grey

BASALT BAND

PRODUCT TYPE:	Basalt Banding - Village name (e.g., COOK ST. VLG).
PRODUCT NAME:	Basalt Banding*.
INSTALLATION METHOD:	Mortar Set. Natural Basalt with flamed/thermal finish and sawn edges.
COLOUR/FINISH:	Mortar colour to match stone-dark grey colour.
APPLICATION:	Corner entry banding insert.
ORIENTATION:	Towards user approaching named street.
SUPPLIER:	Bedrock Natural Stone or approved equivalent.

SIZE: 1200mm x 450mm x 80mm or imperial 17 ¾" x 48" long x 3" with street name sandblasted in and centered on the block.

- FONT:**
- Use abbreviations for street, avenue, road or others, such as: St.; Ave.; Rd.; with capital letter, and punctuation at the end.
 - Font: Cheltenham Medium.
 - The font size is 90mm (3 ½") with 50mm (2") on either side to the edge of the basalt.
 - Note: Letter spacing and kerning should achieve a legible, centred street name on the basalt block.



COOK ST. VLG

